

**General Information**

**Urbanized Area (UA) Statistics - 2010 Census**

Lake Charles, LA  
 127 **Square Miles**  
 143,440 **Population**  
 228 **Pop. Rank out of 498 UZAs**

**Service Area Statistics**

43 **Square Miles**  
 73,474 **Population**

**Service Consumption**

95,627 **Annual Unlinked Trips (UPT)**

**Service Supplied**

170,676 **Annual Vehicle Revenue Miles (VRM)**  
 14,404 **Annual Vehicle Revenue Hours (VRH)**

**Database Information**

NTDID: 60023  
 Reporter Type: Reduced Reporter

Asset Type: Tier II  
 Sponsor NTDID:

**Financial Information**

**Sources of Operating Funds Expended**

Fare Revenues	\$63,993	1.9%
Local Funds	\$240,566	7.2%
State Funds	\$116,271	3.5%
Federal Assistance	\$2,894,474	86.1%
Other Funds	\$45,124	1.3%
<b>Total Operating Funds Expended</b>	<b>\$3,360,428</b>	<b>100.0%</b>

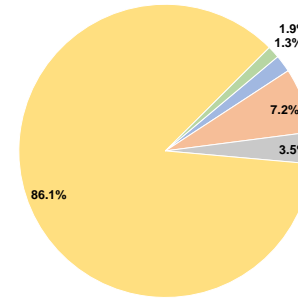
**Sources of Capital Funds Expended**

Fare Revenues	\$0	0.0%
Local Funds	\$208,227	16.4%
State Funds	\$0	0.0%
Federal Assistance	\$1,065,036	83.6%
Other Funds	\$0	0.0%
<b>Total Capital Funds Expended</b>	<b>\$1,273,263</b>	<b>100.0%</b>

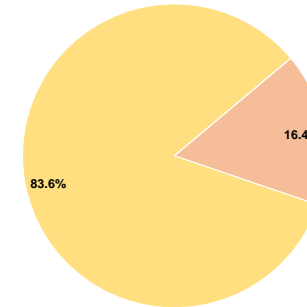
**Assets**

Revenue Vehicles	13
Service Vehicles	5
Facilities	2

**Operating Funding Sources**



**Capital Funding Sources**



**Performance Measure Targets - 2021**

Performance Measure - Asset Type - Target % not in State of Good Repair  
 Equipment - Automobiles - 0%  
 Equipment - Trucks and other Rubber Tire Vehicles - 0%  
 Facility - Administrative / Maintenance Facilities - 0%  
 Facility - Passenger / Parking Facilities - 0%  
 Rolling Stock - BU - Bus - 0%  
 Rolling Stock - CU - Cutaway - 0%

**Modal Characteristics**

**Operation Characteristics**

**Vehicles Operated at Maximum Service**

Mode	Directly Operated	Purchased Transportation	Operating Expenses	Fare Revenues	Uses of Capital Funds	Annual Unlinked Trips	Annual Vehicle Revenue Miles	Annual Vehicle Revenue Hours	Average Fleet Age in Years <sup>a</sup>
Demand Response	2	-	\$840,107	\$1,915	\$318,316	1,915	29,277	3,160	3.0
Bus	5	-	\$2,520,321	\$62,078	\$954,947	93,712	141,399	11,244	6.2
<b>Total</b>	<b>7</b>	<b>-</b>	<b>\$3,360,428</b>	<b>\$63,993</b>	<b>\$1,273,263</b>	<b>95,627</b>	<b>170,676</b>	<b>14,404</b>	

**Performance Measures**

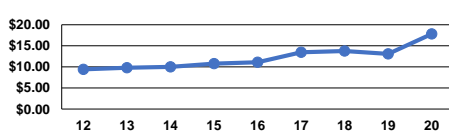
**Service Efficiency**

Mode	Operating Expenses per Vehicle Revenue Mile	Operating Expenses per Vehicle Revenue Hour
Demand Response	\$28.70	\$265.86
Bus	\$17.82	\$224.15
<b>Total</b>	<b>\$19.69</b>	<b>\$233.30</b>

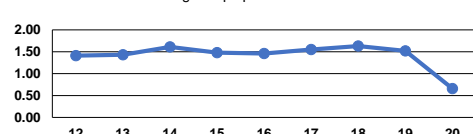
**Service Effectiveness**

Mode	Operating Expenses per Unlinked Passenger Trip	Unlinked Trips per Vehicle Revenue Mile	Unlinked Trips per Vehicle Revenue Hour
Demand Response	\$438.70	0.1	0.6
Bus	\$26.89	0.7	8.3
<b>Total</b>	<b>\$35.14</b>	<b>0.6</b>	<b>6.6</b>

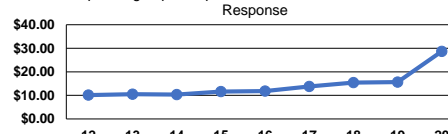
Operating Expense per Vehicle Revenue Mile: Bus



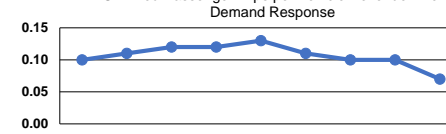
Unlinked Passenger Trips per Vehicle Revenue Mile: Bus



Operating Expense per Vehicle Revenue Mile: Demand Response



Unlinked Passenger Trips per Vehicle Revenue Mile: Demand Response



**Notes:**

<sup>a</sup>Demand Response - Taxi (DT) and non-dedicated fleets do not report fleet age data.