

General Information

Urbanized Area (UZA) Statistics - 2010 Census

Fayetteville-Springdale-Rogers, AR-MO
 188 **Square Miles**
 295,083 **Population**
 129 **Pop. Rank out of 498 UZAs**

Other UZAs Served

0 Arkansas Non-UZA

Service Area Statistics

3,253 **Square Miles**
 467,570 **Population**

Service Consumption

175,029 **Annual Unlinked Trips (UPT)**

Service Supplied

608,394 **Annual Vehicle Revenue Miles (VRM)**
 45,782 **Annual Vehicle Revenue Hours (VRH)**

Database Information

NTDID: 60072
 Reporter Type: Reduced Reporter

Asset Type: Tier II
 Sponsor NTDID:

Financial Information

Sources of Operating Funds Expended

Fare Revenues	\$7,938	0.2%
Local Funds	\$767,145	21.8%
State Funds	\$195,764	5.6%
Federal Assistance	\$2,447,953	69.4%
Other Funds	\$106,111	3.0%
Total Operating Funds Expended	\$3,524,911	100.0%

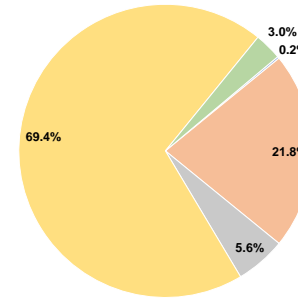
Sources of Capital Funds Expended

Fare Revenues	\$0	0.0%
Local Funds	\$0	0.0%
State Funds	\$0	0.0%
Federal Assistance	\$2,050,639	98.1%
Other Funds	\$39,875	1.9%
Total Capital Funds Expended	\$2,090,514	100.0%

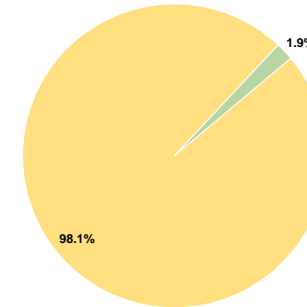
Assets

Revenue Vehicles	36
Service Vehicles	8
Facilities	4

Operating Funding Sources



Capital Funding Sources



Performance Measure Targets - 2021

Performance Measure - Asset Type - Target % not in State of Good Repair
 Equipment - Automobiles - 100%
 Equipment - Trucks and other Rubber Tire Vehicles - 80%
 Facility - Administrative / Maintenance Facilities - 50%
 Rolling Stock - BU - Bus - 0%
 Rolling Stock - CU - Cutaway - 0%
 Rolling Stock - MV - Minivan - 40%

Modal Characteristics

Operation Characteristics

Vehicles Operated at Maximum Service

Mode	Directly Operated	Purchased Transportation	Operating Expenses	Fare Revenues	Uses of Capital Funds	Annual Unlinked Trips	Annual Vehicle Revenue Miles	Annual Vehicle Revenue Hours	Average Fleet Age in Years ^a
Demand Response	9	-	\$881,882	\$805	\$0	13,238	122,196	11,454	3.1
Bus	11	-	\$2,643,029	\$7,133	\$2,090,514	161,791	486,198	34,328	2.4
Total	20	-	\$3,524,911	\$7,938	\$2,090,514	175,029	608,394	45,782	

Performance Measures

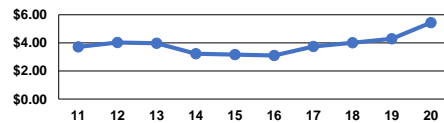
Service Efficiency

Mode	Operating Expenses per Vehicle Revenue Mile	Operating Expenses per Vehicle Revenue Hour
Demand Response	\$7.22	\$76.99
Bus	\$5.44	\$76.99
Total	\$5.79	\$76.99

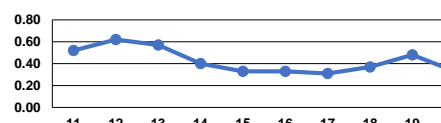
Service Effectiveness

Mode	Operating Expenses per Unlinked Passenger Trip	Unlinked Trips per Vehicle Revenue Mile	Unlinked Trips per Vehicle Revenue Hour
Demand Response	\$66.62	0.1	1.2
Bus	\$16.34	0.3	4.7
Total	\$20.14	0.3	3.8

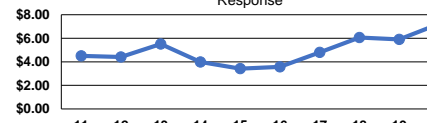
Operating Expense per Vehicle Revenue Mile: Bus



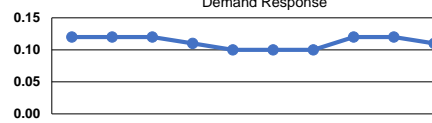
Unlinked Passenger Trips per Vehicle Revenue Mile: Bus



Operating Expense per Vehicle Revenue Mile: Demand Response



Unlinked Passenger Trips per Vehicle Revenue Mile: Demand Response



Notes:

^aDemand Response - Taxi (DT) and non-dedicated fleets do not report fleet age data.