

**General Information**

**Urbanized Area (UA) Statistics - 2010 Census**

Conroe-The Woodlands, TX  
 133 Square Miles  
 239,938 Population  
 154 Pop. Rank out of 498 UZAs

**Service Area Statistics**

53 Square Miles  
 56,207 Population

**Service Consumption**

50,579 Annual Unlinked Trips (UPT)

**Service Supplied**

174,387 Annual Vehicle Revenue Miles (VRM)  
 13,610 Annual Vehicle Revenue Hours (VRH)

**Database Information**

NTDID: 60129  
 Reporter Type: Reduced Reporter

Asset Type: Tier II  
 Sponsor NTDID:

**Financial Information**

**Sources of Operating Funds Expended**

Fare Revenues	\$90,416	4.4%
Local Funds	\$627,231	30.8%
State Funds	\$79,712	3.9%
Federal Assistance	\$1,239,433	60.9%
Other Funds	\$0	0.0%
<b>Total Operating Funds Expended</b>	<b>\$2,036,792</b>	<b>100.0%</b>

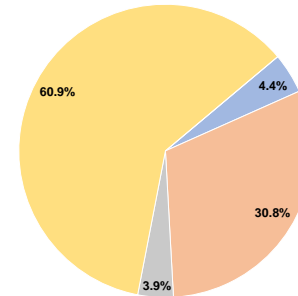
**Sources of Capital Funds Expended**

Fare Revenues	\$0	0.0%
Local Funds	\$247,438	55.2%
State Funds	\$0	0.0%
Federal Assistance	\$201,011	44.8%
Other Funds	\$0	0.0%
<b>Total Capital Funds Expended</b>	<b>\$448,449</b>	<b>100.0%</b>

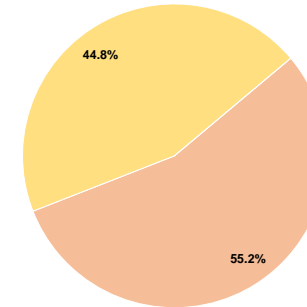
**Assets**

Revenue Vehicles	11
Service Vehicles	0
Facilities	1

**Operating Funding Sources**



**Capital Funding Sources**



**Performance Measure Targets - 2021**

Performance Measure - Asset Type - Target % not in State of Good Repair  
 Facility - Passenger / Parking Facilities - 0%  
 Rolling Stock - CU - Cutaway - 0%  
 Rolling Stock - MV - Minivan - 0%

**Modal Characteristics**

**Operation Characteristics**

**Vehicles Operated at Maximum Service**

Mode	Directly Operated	Purchased Transportation	Operating Expenses	Fare Revenues	Uses of Capital Funds	Annual Unlinked Trips	Annual Vehicle Revenue Miles	Annual Vehicle Revenue Hours	Average Fleet Age in Years <sup>a</sup>
Commuter Bus	-	3 <sup>1</sup>	\$690,963 <sup>1</sup>	\$71,382	\$0 <sup>1</sup>	12,361	46,068	1,433	2.0
Demand Response	-	2	\$338,028	\$7,200	\$0	4,541	25,908	2,891	5.0
Bus	-	3	\$945,746	\$11,834	\$448,449	33,677	102,411	9,286	5.7
<b>Total</b>	<b>-</b>	<b>8</b>	<b>\$1,974,737</b>	<b>\$90,416</b>	<b>\$448,449</b>	<b>50,579</b>	<b>174,387</b>	<b>13,610</b>	

**Performance Measures**

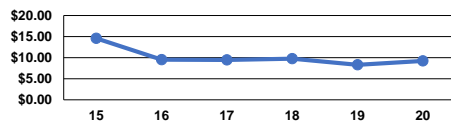
**Service Efficiency**

Mode	Operating Expenses per Vehicle Revenue Mile	Operating Expenses per Vehicle Revenue Hour
Commuter Bus	\$15.00	\$482.18
Demand Response	\$13.05	\$116.92
Bus	\$9.23	\$101.85
<b>Total</b>	<b>\$11.32</b>	<b>\$145.09</b>

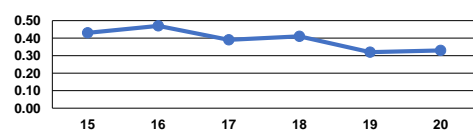
**Service Effectiveness**

Mode	Operating Expenses per Unlinked Passenger Trip	Unlinked Trips per Vehicle Revenue Mile	Unlinked Trips per Vehicle Revenue Hour
Commuter Bus	\$55.90	0.3	8.6
Demand Response	\$74.44	0.2	1.6
Bus	\$28.08	0.3	3.6
<b>Total</b>	<b>\$39.04</b>	<b>0.3</b>	<b>3.7</b>

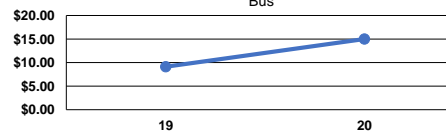
Operating Expense per Vehicle Revenue Mile: Bus



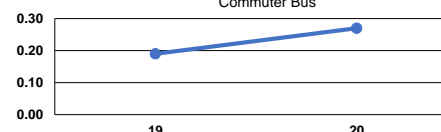
Unlinked Passenger Trips per Vehicle Revenue Mile: Bus



Operating Expense per Vehicle Revenue Mile: Commuter Bus



Unlinked Passenger Trips per Vehicle Revenue Mile: Commuter Bus



**Notes:**

<sup>a</sup>Demand Response - Taxi (DT) and non-dedicated fleets do not report fleet age data.

<sup>1</sup>Includes data for a contract with another reporter.

\*This agency has a purchased transportation relationship in which they buy service from Metropolitan Transit Authority of Harris County, Texas (NTDID: 60008), and in which the data are captured in this report for mode CB/PT.

