

**General Information**

**Urbanized Area (UZA) Statistics - 2010 Census**

San Marcos, TX  
 27 **Square Miles**  
 52,826 **Population**  
 479 **Pop. Rank out of 498 UZAs**

**Other UZAs Served**

0 Texas Non-UZA, 37 Austin, TX

**Service Area Statistics**

24 **Square Miles**  
 63,071 **Population**

**Service Consumption**

9,921 **Annual Unlinked Trips (UPT)**

**Service Supplied**

34,846 **Annual Vehicle Revenue Miles (VRM)**  
 2,270 **Annual Vehicle Revenue Hours (VRH)**

**Database Information**

NTDID: 60131  
 Reporter Type: Reduced Reporter

Asset Type: Tier II  
 Sponsor NTDID:

**Financial Information**

**Sources of Operating Funds Expended**

Fare Revenues	\$13,987	9.0%
Local Funds	\$57,554	37.0%
State Funds	\$19,227	12.4%
Federal Assistance	\$64,749	41.6%
Other Funds	\$0	0.0%
<b>Total Operating Funds Expended</b>	<b>\$155,517</b>	<b>100.0%</b>

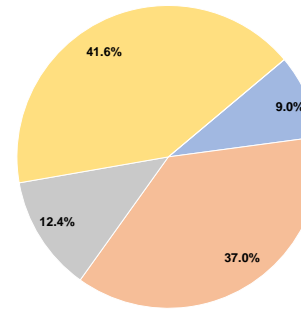
**Sources of Capital Funds Expended**

Fare Revenues	\$0
Local Funds	\$0
State Funds	\$0
Federal Assistance	\$0
Other Funds	\$0
<b>Total Capital Funds Expended</b>	<b>\$0</b>

**Assets**

Revenue Vehicles	16
Service Vehicles	0
Facilities	1

**Operating Funding Sources**



**Performance Measure Targets - 2021**

Performance Measure - Asset Type - Target % not in State of Good Repair  
 Rolling Stock - BU - Bus - 11%  
 Rolling Stock - CU - Cutaway - 0%

**Modal Characteristics**

**Operation Characteristics**

**Vehicles Operated at Maximum Service**

Mode	Directly Operated	Purchased Transportation	Operating Expenses	Fare Revenues	Uses of Capital Funds	Annual Unlinked Trips	Annual Vehicle Revenue Miles	Annual Vehicle Revenue Hours	Average Fleet Age in Years <sup>a</sup>
Commuter Bus	12	-	\$17,012	\$8,737	\$0	4,020	10,640	334	5.3
Demand Response	4	-	\$38,181	\$1,047	\$0	837	4,358	541	5.5
Bus	4	-	\$100,324	\$4,203	\$0	5,064	19,848	1,395	4.8
<b>Total</b>	<b>20</b>	<b>-</b>	<b>\$155,517</b>	<b>\$13,987</b>	<b>\$0</b>	<b>9,921</b>	<b>34,846</b>	<b>2,270</b>	

**Performance Measures**

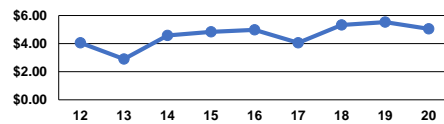
**Service Efficiency**

Mode	Operating Expenses per Vehicle Revenue Mile	Operating Expenses per Vehicle Revenue Hour
Commuter Bus	\$1.60	\$50.93
Demand Response	\$8.76	\$70.57
Bus	\$5.05	\$71.92
<b>Total</b>	<b>\$4.46</b>	<b>\$68.51</b>

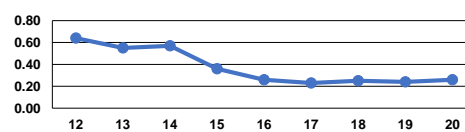
**Service Effectiveness**

Mode	Operating Expenses per Unlinked Passenger Trip	Unlinked Trips per Vehicle Revenue Mile	Unlinked Trips per Vehicle Revenue Hour
Commuter Bus	\$4.23	0.4	12.0
Demand Response	\$45.62	0.2	1.5
Bus	\$19.81	0.3	3.6
<b>Total</b>	<b>\$15.68</b>	<b>0.3</b>	<b>4.4</b>

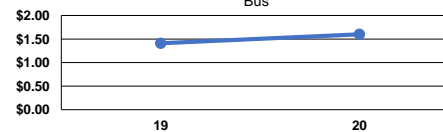
Operating Expense per Vehicle Revenue Mile: Bus



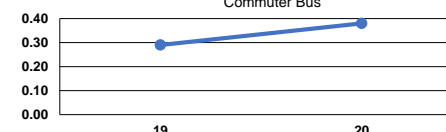
Unlinked Passenger Trips per Vehicle Revenue Mile: Bus



Operating Expense per Vehicle Revenue Mile: Commuter Bus



Unlinked Passenger Trips per Vehicle Revenue Mile: Commuter Bus



**Notes:**

<sup>a</sup>Demand Response - Taxi (DT) and non-dedicated fleets do not report fleet age data.

