

General Information

Urbanized Area (UZA) Statistics - 2010 Census

McAllen, TX
 358 Square Miles
 728,825 Population
 57 Pop. Rank out of 498 UZAs

Other UZAs Served

164 Brownsville, TX, 237 Harlingen, TX, 0 Texas Non-UZA

Service Area Statistics

521 Square Miles
 805,270 Population

Service Consumption

77,985 Annual Unlinked Trips (UPT)

Service Supplied

295,965 Annual Vehicle Revenue Miles (VRM)
 10,887 Annual Vehicle Revenue Hours (VRH)

Database Information

NTDID: 60273
 Reporter Type: Reduced Reporter

Asset Type: Tier II
 Sponsor NTDID:

Assets
 Revenue Vehicles 32
 Service Vehicles 0
 Facilities 0

Financial Information

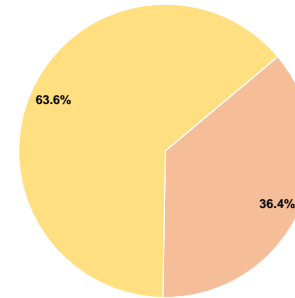
Sources of Operating Funds Expended

Fare Revenues	\$0	0.0%
Local Funds	\$556,239	36.4%
State Funds	\$0	0.0%
Federal Assistance	\$971,915	63.6%
Other Funds	\$0	0.0%
Total Operating Funds Expended	\$1,528,154	100.0%

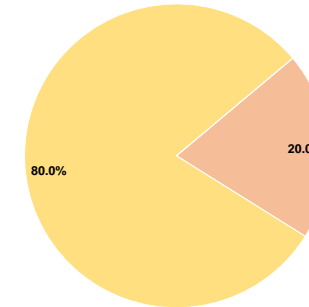
Sources of Capital Funds Expended

Fare Revenues	\$0	0.0%
Local Funds	\$4,537	20.0%
State Funds	\$0	0.0%
Federal Assistance	\$18,147	80.0%
Other Funds	\$0	0.0%
Total Capital Funds Expended	\$22,684	100.0%

Operating Funding Sources



Capital Funding Sources



Performance Measure Targets - 2021

Performance Measure - Asset Type - Target % not in State of Good Repair
 Rolling Stock - CU - Cutaway - 40%
 Rolling Stock - OR - Other - 0%
 Rolling Stock - VN - Van - 0%

Modal Characteristics

Operation Characteristics

Vehicles Operated at Maximum Service

Mode	Directly Operated	Purchased Transportation	Operating Expenses	Fare Revenues	Uses of Capital Funds	Annual Unlinked Trips	Annual Vehicle Revenue Miles	Annual Vehicle Revenue Hours	Average Fleet Age in Years ^a
Bus	14	-	\$1,528,154	\$0	\$22,684	77,985	295,965	10,887	3.9
Total	14	-	\$1,528,154	\$0	\$22,684	77,985	295,965	10,887	

Performance Measures

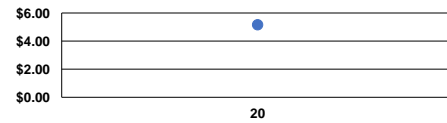
Service Efficiency

Mode	Operating Expenses per Vehicle Revenue Mile	Operating Expenses per Vehicle Revenue Hour
Bus	\$5.16	\$140.37
Total	\$5.16	\$140.37

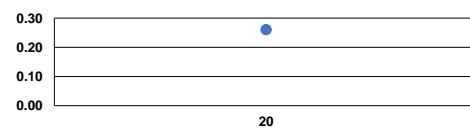
Service Effectiveness

Mode	Operating Expenses per Unlinked Passenger Trip	Unlinked Trips per Vehicle Revenue Mile	Unlinked Trips per Vehicle Revenue Hour
Bus	\$19.60	0.3	7.2
Total	\$19.60	0.3	7.2

Operating Expense per Vehicle Revenue Mile: Bus



Unlinked Passenger Trips per Vehicle Revenue Mile: Bus



Notes:

^aDemand Response - Taxi (DT) and non-dedicated fleets do not report fleet age data.