

General Information

Urbanized Area (UZA) Statistics - 2010 Census

McAllen, TX
 358 Square Miles
 728,825 Population
 57 Pop. Rank out of 498 UZAs

Service Area Statistics

63 Square Miles
 144,744 Population

Service Consumption

8,465 Annual Unlinked Trips (UPT)

Service Supplied

41,669 Annual Vehicle Revenue Miles (VRM)
 2,683 Annual Vehicle Revenue Hours (VRH)

Database Information

NTDID: 60274
 Reporter Type: Reduced Reporter
 Asset Type: Tier II
 Sponsor NTDID:

Financial Information

Sources of Operating Funds Expended

Fare Revenues	\$0	0.0%
Local Funds	\$26,973	7.7%
State Funds	\$0	0.0%
Federal Assistance	\$322,190	92.3%
Other Funds	\$0	0.0%
Total Operating Funds Expended	\$349,163	100.0%

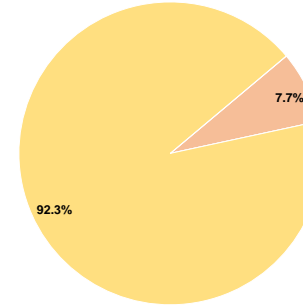
Sources of Capital Funds Expended

Fare Revenues	\$0
Local Funds	\$0
State Funds	\$0
Federal Assistance	\$0
Other Funds	\$0
Total Capital Funds Expended	\$0

Assets

Revenue Vehicles	11
Service Vehicles	0
Facilities	0

Operating Funding Sources



Performance Measure Targets - 2021

Performance Measure - Asset Type - Target % not in State of Good Repair
 Rolling Stock - BU - Bus - 0%
 Rolling Stock - CU - Cutaway - 22%

Modal Characteristics

Operation Characteristics

Vehicles Operated at Maximum Service

Mode	Directly Operated	Purchased Transportation	Operating Expenses	Fare Revenues	Uses of Capital Funds	Annual Unlinked Trips	Annual Vehicle Revenue Miles	Annual Vehicle Revenue Hours	Average Fleet Age in Years ^a
Bus	8	-	\$349,163	\$0	\$0	8,465	41,669	2,683	5.6
Total	8	-	\$349,163	\$0	\$0	8,465	41,669	2,683	

Performance Measures

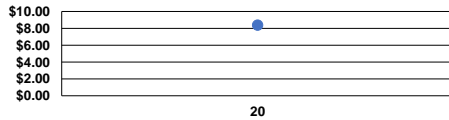
Service Efficiency

Mode	Operating Expenses per Vehicle Revenue Mile	Operating Expenses per Vehicle Revenue Hour
Bus	\$8.38	\$130.14
Total	\$8.38	\$130.14

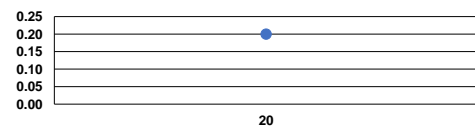
Service Effectiveness

Mode	Operating Expenses per Unlinked Passenger Trip	Unlinked Trips per Vehicle Revenue Mile	Unlinked Trips per Vehicle Revenue Hour
Bus	\$41.25	0.2	3.2
Total	\$41.25	0.2	3.2

Operating Expense per Vehicle Revenue Mile: Bus



Unlinked Passenger Trips per Vehicle Revenue Mile: Bus



Notes:

^aDemand Response - Taxi (DT) and non-dedicated fleets do not report fleet age data.