

**General Information**

**Federally Recognized Tribal Statistical Areas**

Santa Ana Pueblo, NM

**Service Consumption**

10,315 Annual Unlinked Trips (UPT)

**Service Supplied**

43,644 Annual Vehicle Revenue Miles (VRM)  
 4,734 Annual Vehicle Revenue Hours (VRH)

**Database Information**

NTDID: 66152  
 Reporter Type: Tribal Reporter

Asset Type: Tier II  
 Sponsor NTDID:

**Financial Information**

**Sources of Operating Funds Expended**

Fare Revenues	\$0	0.0%
Local Funds	\$133,379	64.7%
State Funds	\$0	0.0%
Federal Assistance	\$72,803	35.3%
Other Funds	\$0	0.0%
<b>Total Operating Funds Expended</b>	<b>\$206,182</b>	<b>100.0%</b>

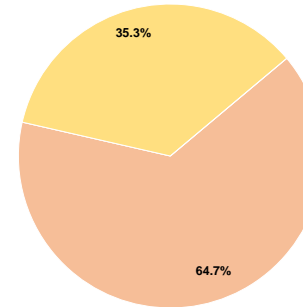
**Sources of Capital Funds Expended**

Fare Revenues	\$0
Local Funds	\$0
State Funds	\$0
Federal Assistance	\$0
Other Funds	\$0
<b>Total Capital Funds Expended</b>	<b>\$0</b>

**Assets**

Revenue Vehicles	7
Service Vehicles	0
Facilities	0

**Operating Funding Sources**



**Performance Measure Targets - 2021**

Performance Measure - Asset Type - Target % not in State of Good Repair  
 Rolling Stock - BU - Bus - 0%  
 Rolling Stock - CU - Cutaway - 50%  
 Rolling Stock - MV - Minivan - 0%  
 Rolling Stock - VN - Van - 100%

**Modal Characteristics**

**Operation Characteristics**

**Vehicles Operated at Maximum Service**

Mode	Directly Operated	Purchased Transportation	Operating Expenses	Fare Revenues	Uses of Capital Funds	Annual Unlinked Trips	Annual Vehicle Revenue Miles	Annual Vehicle Revenue Hours	Average Fleet Age in Years <sup>a</sup>
Bus	3	-	\$206,182	\$0	\$0	10,315	43,644	4,734	6.7
<b>Total</b>	<b>3</b>	<b>-</b>	<b>\$206,182</b>	<b>\$0</b>	<b>\$0</b>	<b>10,315</b>	<b>43,644</b>	<b>4,734</b>	

**Performance Measures**

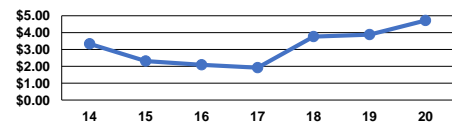
**Service Efficiency**

Operating Expenses per Vehicle Revenue Mile	Operating Expenses per Vehicle Revenue Hour
Bus \$4.72	\$43.55
<b>Total \$4.72</b>	<b>\$43.55</b>

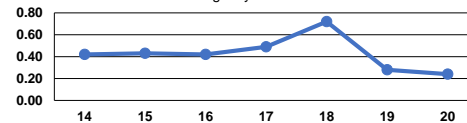
**Service Effectiveness**

Mode	Operating Expenses per Unlinked Passenger Trip	Unlinked Trips per Vehicle Revenue Mile	Unlinked Trips per Vehicle Revenue Hour
Bus	\$19.99	0.2	2.2
<b>Total</b>	<b>\$19.99</b>	<b>0.2</b>	<b>2.2</b>

Operating Expense per Vehicle Revenue Mile: Agency Total



Unlinked Passenger Trips per Vehicle Revenue Mile: Agency Total



**Notes:**

<sup>a</sup>Demand Response - Taxi (DT) and non-dedicated fleets do not report fleet age data.