

**General Information**

**Federally Recognized Tribal Statistical Areas**

Kiowa-Comanche-Apache-Fort Sill Apache OTSA, OK - Kiowa-Comanche-Apache-Ft Sill  
Apache/Caddo-Wichita-Delaware joint-use OTSA, OK

**Service Consumption**

7,351 Annual Unlinked Trips (UPT)

**Service Supplied**

87,868 Annual Vehicle Revenue Miles (VRM)  
2,204 Annual Vehicle Revenue Hours (VRH)

**Database Information**

NTDID: 66164  
Reporter Type: Tribal Reporter

Asset Type:  
Sponsor NTDID:

Tier II

**Assets**

Revenue Vehicles	8
Service Vehicles	0
Facilities	1

**Financial Information**

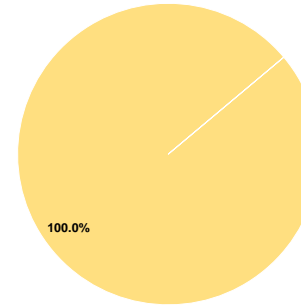
**Sources of Operating Funds Expended**

Fare Revenues	\$0	0.0%
Local Funds	\$0	0.0%
State Funds	\$0	0.0%
Federal Assistance	\$260,442	100.0%
Other Funds	\$0	0.0%
<b>Total Operating Funds Expended</b>	<b>\$260,442</b>	<b>100.0%</b>

**Sources of Capital Funds Expended**

Fare Revenues	\$0
Local Funds	\$0
State Funds	\$0
Federal Assistance	\$0
Other Funds	\$0
<b>Total Capital Funds Expended</b>	<b>\$0</b>

**Operating Funding Sources**



**Performance Measure Targets - 2021**

Performance Measure - Asset Type - Target % not in State of Good Repair  
Facility - Administrative / Maintenance Facilities - 0%  
Rolling Stock - MV - Minivan - 50%  
Rolling Stock - VN - Van - 50%

**Modal Characteristics**

**Operation Characteristics**

**Vehicles Operated at Maximum Service**

Mode	Directly Operated	Purchased Transportation	Operating Expenses	Fare Revenues	Uses of Capital Funds	Annual Unlinked Trips	Annual Vehicle Revenue Miles	Annual Vehicle Revenue Hours	Average Fleet Age in Years <sup>a</sup>
Demand Response	7	-	\$260,442	\$0	\$0	7,351	87,868	2,204	7.3
<b>Total</b>	<b>7</b>	<b>-</b>	<b>\$260,442</b>	<b>\$0</b>	<b>\$0</b>	<b>7,351</b>	<b>87,868</b>	<b>2,204</b>	

**Performance Measures**

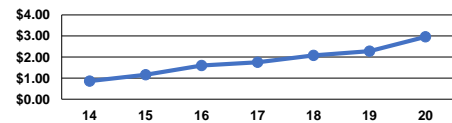
**Service Efficiency**

Mode	Operating Expenses per Vehicle Revenue Mile	Operating Expenses per Vehicle Revenue Hour
Demand Response	\$2.96	\$118.17
<b>Total</b>	<b>\$2.96</b>	<b>\$118.17</b>

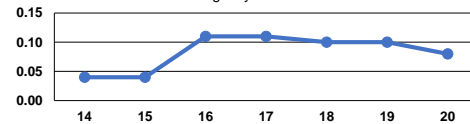
**Service Effectiveness**

Mode	Operating Expenses per Unlinked Passenger Trip	Unlinked Trips per Vehicle Revenue Mile	Unlinked Trips per Vehicle Revenue Hour
Demand Response	\$35.43	0.1	3.3
<b>Total</b>	<b>\$35.43</b>	<b>0.1</b>	<b>3.3</b>

Operating Expense per Vehicle Revenue Mile: Agency Total



Unlinked Passenger Trips per Vehicle Revenue Mile: Agency Total



**Notes:**

<sup>a</sup>Demand Response - Taxi (DT) and non-dedicated fleets do not report fleet age data.