

**General Information**

**Federally Recognized Tribal Statistical Areas**  
 Cherokee OTSA, OK

**Service Consumption**  
 2,521 Annual Unlinked Trips (UPT)

**Service Supplied**  
 13,763 Annual Vehicle Revenue Miles (VRM)  
 918 Annual Vehicle Revenue Hours (VRH)

**Database Information**  
 NTDID: 66176  
 Reporter Type: Tribal Reporter

Asset Type: Tier II  
 Sponsor NTDID:

**Assets**  
 Revenue Vehicles 5  
 Service Vehicles 2  
 Facilities 2

**Financial Information**

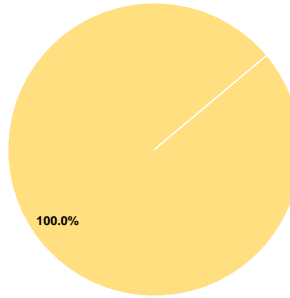
**Sources of Operating Funds Expended**

Fare Revenues	\$0	0.0%
Local Funds	\$0	0.0%
State Funds	\$0	0.0%
Federal Assistance	\$99,268	100.0%
Other Funds	\$0	0.0%
<b>Total Operating Funds Expended</b>	<b>\$99,268</b>	<b>100.0%</b>

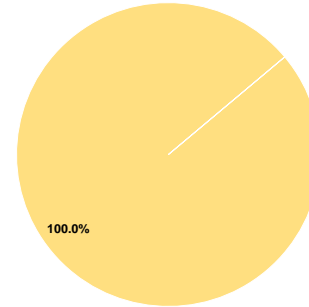
**Sources of Capital Funds Expended**

Fare Revenues	\$0	0.0%
Local Funds	\$0	0.0%
State Funds	\$0	0.0%
Federal Assistance	\$150,196	100.0%
Other Funds	\$0	0.0%
<b>Total Capital Funds Expended</b>	<b>\$150,196</b>	<b>100.0%</b>

**Operating Funding Sources**



**Capital Funding Sources**



**Performance Measure Targets - 2021**

Performance Measure - Asset Type - Target % not in State of Good Repair  
 Equipment - Trucks and other Rubber Tire Vehicles - 100%  
 Facility - Administrative / Maintenance Facilities - 0%  
 Rolling Stock - MV - Minivan - 75%  
 Rolling Stock - VN - Van - 100%

**Modal Characteristics**

**Operation Characteristics**

**Vehicles Operated at Maximum Service**

Mode	Directly Operated	Purchased Transportation	Operating Expenses	Fare Revenues	Uses of Capital Funds	Annual Unlinked Trips	Annual Vehicle Revenue Miles	Annual Vehicle Revenue Hours	Average Fleet Age in Years <sup>a</sup>
Demand Response	3	-	\$99,268	\$0	\$150,196	2,521	13,763	918	4.8
<b>Total</b>	<b>3</b>	<b>-</b>	<b>\$99,268</b>	<b>\$0</b>	<b>\$150,196</b>	<b>2,521</b>	<b>13,763</b>	<b>918</b>	

**Performance Measures**

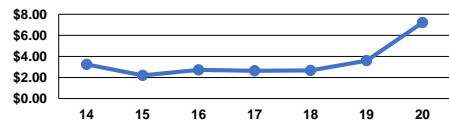
**Service Efficiency**

Mode	Operating Expenses per Vehicle Revenue Mile	Operating Expenses per Vehicle Revenue Hour
Demand Response	\$7.21	\$108.14
<b>Total</b>	<b>\$7.21</b>	<b>\$108.14</b>

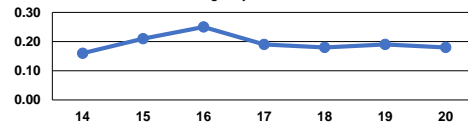
**Service Effectiveness**

Mode	Operating Expenses per Unlinked Passenger Trip	Unlinked Trips per Vehicle Revenue Mile	Unlinked Trips per Vehicle Revenue Hour
Demand Response	\$39.38	0.2	2.7
<b>Total</b>	<b>\$39.38</b>	<b>0.2</b>	<b>2.7</b>

Operating Expense per Vehicle Revenue Mile: Agency Total



Unlinked Passenger Trips per Vehicle Revenue Mile: Agency Total



**Notes:**

<sup>a</sup>Demand Response - Taxi (DT) and non-dedicated fleets do not report fleet age data.