

**General Information**

**Urbanized Area (UZA) Statistics - 2010 Census**

St. Joseph, MO-KS  
 42 Square Miles  
 81,176 Population  
 354 Pop. Rank out of 498 UZAs

**Service Area Statistics**

39 Square Miles  
 77,645 Population

**Service Consumption**

330,664 Annual Unlinked Trips (UPT)

**Service Supplied**

767,806 Annual Vehicle Revenue Miles (VRM)  
 64,418 Annual Vehicle Revenue Hours (VRH)

**Database Information**

NTDID: 70032  
 Reporter Type: Reduced Reporter  
 Asset Type: Tier II  
 Sponsor NTDID:

**Financial Information**

**Sources of Operating Funds Expended**

|                                       |                    |               |
|---------------------------------------|--------------------|---------------|
| Fare Revenues                         | \$248,816          | 5.0%          |
| Local Funds                           | \$2,567,961        | 51.1%         |
| State Funds                           | \$46,217           | 0.9%          |
| Federal Assistance                    | \$1,691,880        | 33.7%         |
| Other Funds                           | \$469,359          | 9.3%          |
| <b>Total Operating Funds Expended</b> | <b>\$5,024,233</b> | <b>100.0%</b> |

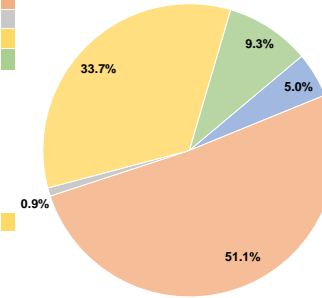
**Sources of Capital Funds Expended**

|                                     |                  |               |
|-------------------------------------|------------------|---------------|
| Fare Revenues                       | \$0              | 0.0%          |
| Local Funds                         | \$0              | 0.0%          |
| State Funds                         | \$0              | 0.0%          |
| Federal Assistance                  | \$108,196        | 100.0%        |
| Other Funds                         | \$0              | 0.0%          |
| <b>Total Capital Funds Expended</b> | <b>\$108,196</b> | <b>100.0%</b> |

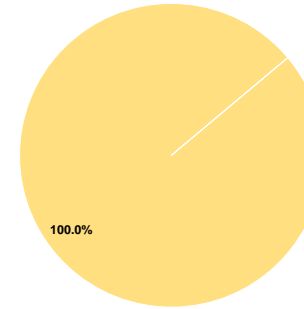
**Assets**

|                  |    |
|------------------|----|
| Revenue Vehicles | 25 |
| Service Vehicles | 5  |
| Facilities       | 3  |

**Operating Funding Sources**



**Capital Funding Sources**



**Performance Measure Targets - 2021**

Performance Measure - Asset Type - Target % not in State of Good Repair  
 Equipment - Trucks and other Rubber Tire Vehicles - 0%  
 Facility - Administrative / Maintenance Facilities - 0%  
 Facility - Passenger / Parking Facilities - 0%  
 Rolling Stock - BU - Bus - 0%  
 Rolling Stock - CU - Cutaway - 0%

**Modal Characteristics**

**Operation Characteristics**

**Vehicles Operated at Maximum Service**

| Mode         | Directly Operated | Purchased Transportation | Operating Expenses | Fare Revenues    | Uses of Capital Funds | Annual Unlinked Trips | Annual Vehicle Revenue Miles | Annual Vehicle Revenue Hours | Average Fleet Age in Years <sup>a</sup> |
|--------------|-------------------|--------------------------|--------------------|------------------|-----------------------|-----------------------|------------------------------|------------------------------|---|
| Bus          | 16                | -                        | \$5,024,233        | \$248,816        | \$108,196             | 330,664               | 767,806                      | 64,418                       | 7.9                                     |
| <b>Total</b> | <b>16</b>         | <b>-</b>                 | <b>\$5,024,233</b> | <b>\$248,816</b> | <b>\$108,196</b>      | <b>330,664</b>        | <b>767,806</b>               | <b>64,418</b>                |   |

**Performance Measures**

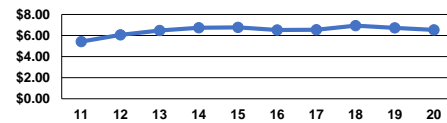
**Service Efficiency**

| Mode         | Operating Expenses per Vehicle Revenue Mile | Operating Expenses per Vehicle Revenue Hour |
|--------------|---|---|
| Bus          | \$6.54                                      | \$77.99                                     |
| <b>Total</b> | <b>\$6.54</b>                               | <b>\$77.99</b>                              |

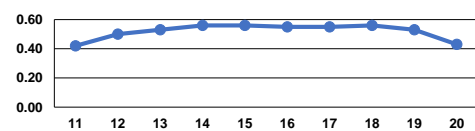
**Service Effectiveness**

| Mode         | Operating Expenses per Unlinked Passenger Trip | Unlinked Trips per Vehicle Revenue Mile | Unlinked Trips per Vehicle Revenue Hour |
|--------------|--|---|---|
| Bus          | \$15.19  | 0.4                                     | 5.1                                     |
| <b>Total</b> | <b>\$15.19</b>                                 | <b>0.4</b>                              | <b>5.1</b>                              |

Operating Expense per Vehicle Revenue Mile: Bus



Unlinked Passenger Trips per Vehicle Revenue Mile: Bus



**Notes:**

<sup>a</sup>Demand Response - Taxi (DT) and non-dedicated fleets do not report fleet age data.