

General Information

Urbanized Area (UZA) Statistics - 2010 Census

Kansas City, MO-KS
 678 Square Miles
 1,519,417 Population
 31 Pop. Rank out of 498 UZAs

Other UZAs Served

0 Kansas Non-UZA

Service Area Statistics

156 Square Miles
 155,085 Population

Service Consumption

145,357 Annual Unlinked Trips (UPT)

Service Supplied

511,051 Annual Vehicle Revenue Miles (VRM)
 30,773 Annual Vehicle Revenue Hours (VRH)

Database Information

NTDID: 70047
 Reporter Type: Reduced Reporter

Asset Type: Tier II
 Sponsor NTDID:

Financial Information

Sources of Operating Funds Expended

Fare Revenues	\$29,844	0.7%
Local Funds	\$0	0.0%
State Funds	\$0	0.0%
Federal Assistance	\$4,417,020	99.3%
Other Funds	\$2,518	0.1%
Total Operating Funds Expended	\$4,449,382	100.0%

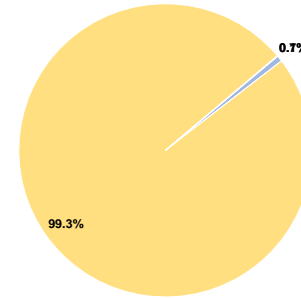
Sources of Capital Funds Expended

Fare Revenues	\$0	0.0%
Local Funds	\$0	0.0%
State Funds	\$0	0.0%
Federal Assistance	\$599,256	100.0%
Other Funds	\$0	0.0%
Total Capital Funds Expended	\$599,256	100.0%

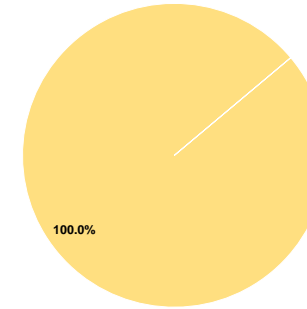
Assets

Revenue Vehicles	30
Service Vehicles	9
Facilities	2

Operating Funding Sources



Capital Funding Sources



Performance Measure Targets - 2021

Performance Measure - Asset Type - Target % not in State of Good Repair
 Equipment - Automobiles - 0%
 Equipment - Trucks and other Rubber Tire Vehicles - 33%
 Facility - Administrative / Maintenance Facilities - 0%
 Facility - Passenger / Parking Facilities - 0%
 Rolling Stock - CU - Cutaway - 4%
 Rolling Stock - VN - Van - 0%

Modal Characteristics

Operation Characteristics

Vehicles Operated at Maximum Service

Mode	Directly Operated	Purchased Transportation	Operating Expenses	Fare Revenues	Uses of Capital Funds	Annual Unlinked Trips	Annual Vehicle Revenue Miles	Annual Vehicle Revenue Hours	Average Fleet Age in Years ^a
Demand Response	13	-	\$2,044,874	\$20,268	\$0	34,063	258,340	18,512	3.7
Bus	10	-	\$2,404,508	\$9,576	\$599,256	111,294	252,711	12,261	2.5
Total	23	-	\$4,449,382	\$29,844	\$599,256	145,357	511,051	30,773	

Performance Measures

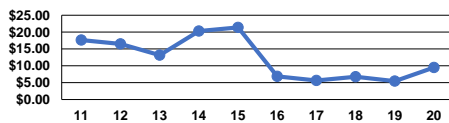
Service Efficiency

Mode	Operating Expenses per Vehicle Revenue Mile	Operating Expenses per Vehicle Revenue Hour
Demand Response	\$7.92	\$110.46
Bus	\$9.51	\$196.11
Total	\$8.71	\$144.59

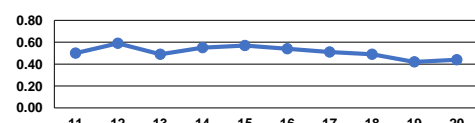
Service Effectiveness

Mode	Operating Expenses per Unlinked Passenger Trip	Unlinked Trips per Vehicle Revenue Mile	Unlinked Trips per Vehicle Revenue Hour
Demand Response	\$60.03	0.1	1.8
Bus	\$21.61	0.4	9.1
Total	\$30.61	0.3	4.7

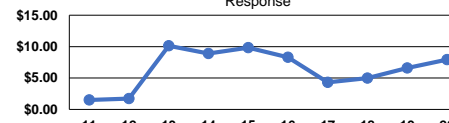
Operating Expense per Vehicle Revenue Mile: Bus



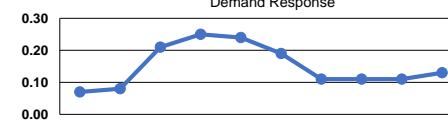
Unlinked Passenger Trips per Vehicle Revenue Mile: Bus



Operating Expense per Vehicle Revenue Mile: Demand Response



Unlinked Passenger Trips per Vehicle Revenue Mile: Demand Response



Notes:

^aDemand Response - Taxi (DT) and non-dedicated fleets do not report fleet age data.