

General Information

Federally Recognized Tribal Statistical Areas

Ponca (NE) Trust Land, NE--IA
 0 Square Miles
 0 Population
 0 Pop. Rank out of 498 UZAs

Service Consumption

17,270 Annual Unlinked Trips (UPT)

Service Supplied

316,844 Annual Vehicle Revenue Miles (VRM)
 10,431 Annual Vehicle Revenue Hours (VRH)

Database Information

NTDID: 77063
 Reporter Type: Tribal Reporter

Asset Type: Tier II
 Sponsor NTDID: 7R04

Assets
 Revenue Vehicles 22
 Service Vehicles 0
 Facilities 2

Financial Information

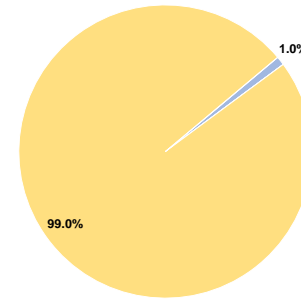
Sources of Operating Funds Expended

Fare Revenues	\$12,117	1.0%
Local Funds	\$0	0.0%
State Funds	\$0	0.0%
Federal Assistance	\$1,228,254	99.0%
Other Funds	\$0	0.0%
Total Operating Funds Expended	\$1,240,371	100.0%

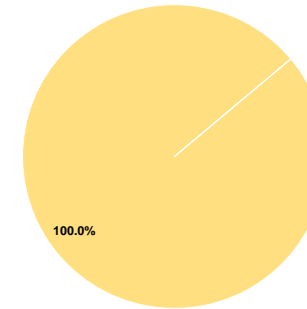
Sources of Capital Funds Expended

Fare Revenues	\$0	0.0%
Local Funds	\$0	0.0%
State Funds	\$0	0.0%
Federal Assistance	\$208,005	100.0%
Other Funds	\$0	0.0%
Total Capital Funds Expended	\$208,005	100.0%

Operating Funding Sources



Capital Funding Sources



Performance Measure Targets - 2021

- Performance Measure - Asset Type - Target % not in State of Good Repair
- Equipment - Trucks and other Rubber Tire Vehicles - 100%
- Facility - Administrative / Maintenance Facilities - 0%
- Rolling Stock - AO - Automobile - 50%
- Rolling Stock - BU - Bus - 50%
- Rolling Stock - CU - Cutaway - 25%
- Rolling Stock - MV - Minivan - 35%
- Rolling Stock - SV - Sports Utility Vehicle - 50%
- Rolling Stock - VN - Van - 80%

Modal Characteristics

Operation Characteristics

Vehicles Operated at Maximum Service

Mode	Directly Operated	Purchased Transportation	Operating Expenses	Fare Revenues	Uses of Capital Funds	Annual Unlinked Trips	Annual Vehicle Revenue Miles	Annual Vehicle Revenue Hours	Average Fleet Age in Years ^a
Demand Response	22	-	\$1,240,371	\$12,117	\$208,005	17,270	316,844	10,431	3.8
Total	22	-	\$1,240,371	\$12,117	\$208,005	17,270	316,844	10,431	

Performance Measures

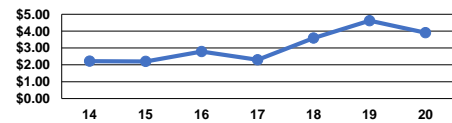
Service Efficiency

Mode	Operating Expenses per Vehicle Revenue Mile	Operating Expenses per Vehicle Revenue Hour
Demand Response	\$3.91	\$118.91
Total	\$3.91	\$118.91

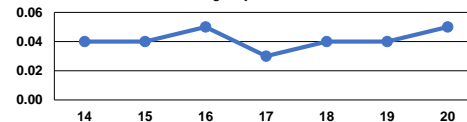
Service Effectiveness

Mode	Operating Expenses per Unlinked Passenger Trip	Unlinked Trips per Vehicle Revenue Mile	Unlinked Trips per Vehicle Revenue Hour
Demand Response	\$71.82	0.1	1.7
Total	\$71.82	0.1	1.7

Operating Expense per Vehicle Revenue Mile: Agency Total



Unlinked Passenger Trips per Vehicle Revenue Mile: Agency Total



Notes:

^aDemand Response - Taxi (DT) and non-dedicated fleets do not report fleet age data.