

General Information

Federally Recognized Tribal Statistical Areas
 Santee Reservation, NE

Service Consumption
 2,352 Annual Unlinked Trips (UPT)

Service Supplied
 35,200 Annual Vehicle Revenue Miles (VRM)
 1,600 Annual Vehicle Revenue Hours (VRH)

Database Information
 NTDID: 77069
 Reporter Type: Tribal Reporter

Asset Type: Tier II
 Sponsor NTDID: 7R04

Financial Information

Sources of Operating Funds Expended

Fare Revenues	\$0	0.0%
Local Funds	\$0	0.0%
State Funds	\$0	0.0%
Federal Assistance	\$67,705	100.0%
Other Funds	\$0	0.0%
Total Operating Funds Expended	\$67,705	100.0%

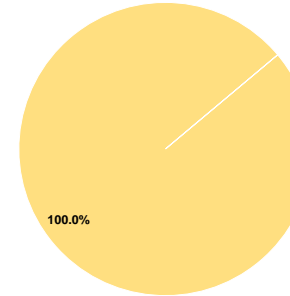
Sources of Capital Funds Expended

Fare Revenues	\$0	0.0%
Local Funds	\$0	0.0%
State Funds	\$0	0.0%
Federal Assistance	\$7,430	100.0%
Other Funds	\$0	0.0%
Total Capital Funds Expended	\$7,430	100.0%

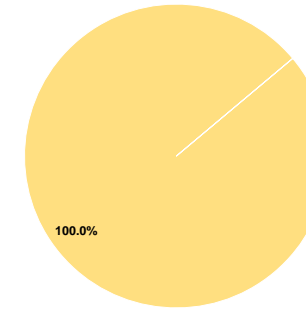
Assets

Revenue Vehicles	3
Service Vehicles	0
Facilities	0

Operating Funding Sources



Capital Funding Sources



Performance Measure Targets - 2021

Performance Measure - Asset Type - Target % not in State of Good Repair
 Equipment - Trucks and other Rubber Tire Vehicles - 100%
 Facility - Administrative / Maintenance Facilities - 0%
 Rolling Stock - AO - Automobile - 50%
 Rolling Stock - BU - Bus - 50%
 Rolling Stock - CU - Cutaway - 25%
 Rolling Stock - MV - Minivan - 35%
 Rolling Stock - SV - Sports Utility Vehicle - 50%
 Rolling Stock - VN - Van - 80%

Modal Characteristics

Operation Characteristics

Vehicles Operated at Maximum Service

Mode	Directly Operated	Purchased Transportation	Operating Expenses	Fare Revenues	Uses of Capital Funds	Annual Unlinked Trips	Annual Vehicle Revenue Miles	Annual Vehicle Revenue Hours	Average Fleet Age in Years ^a
Bus	2	-	\$67,705	\$0	\$7,430	2,352	35,200	1,600	3.0
Total	2	-	\$67,705	\$0	\$7,430	2,352	35,200	1,600	

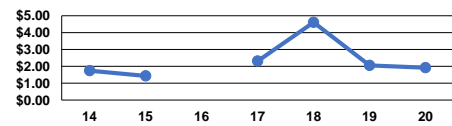
Performance Measures

Service Efficiency

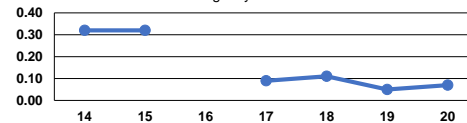
Mode	Operating Expenses per Vehicle Revenue Mile	Operating Expenses per Vehicle Revenue Hour	Mode	Operating Expenses per Unlinked Passenger Trip	Unlinked Trips per Vehicle Revenue Mile	Unlinked Trips per Vehicle Revenue Hour
Bus	\$1.92	\$42.32	Bus	\$28.79	0.1	1.5
Total	\$1.92	\$42.32	Total	\$28.79	0.1	1.5

Service Effectiveness

Operating Expense per Vehicle Revenue Mile: Agency Total



Unlinked Passenger Trips per Vehicle Revenue Mile: Agency Total



Notes:

^aDemand Response - Taxi (DT) and non-dedicated fleets do not report fleet age data.