

**General Information**

**Urbanized Area (UZA) Statistics - 2010 Census**

Cheyenne, WY  
 35 Square Miles  
 73,588 Population  
 377 Pop. Rank out of 498 UZAs

**Service Area Statistics**

18 Square Miles  
 59,466 Population

**Service Consumption**

126,630 Annual Unlinked Trips (UPT)

**Service Supplied**

394,920 Annual Vehicle Revenue Miles (VRM)  
 28,978 Annual Vehicle Revenue Hours (VRH)

**Database Information**

NTDID: 80020  
 Reporter Type: Reduced Reporter  
 Asset Type: Tier II  
 Sponsor NTDID: 8R05

**Financial Information**

**Sources of Operating Funds Expended**

Fare Revenues	\$113,888	6.8%
Local Funds	\$397,279	23.8%
State Funds	\$75,988	4.6%
Federal Assistance	\$1,079,169	64.8%
Other Funds	\$0	0.0%
<b>Total Operating Funds Expended</b>	<b>\$1,666,324</b>	<b>100.0%</b>

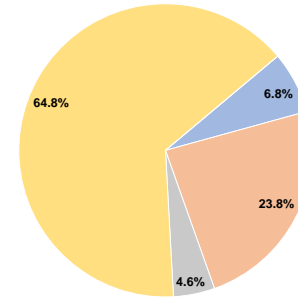
**Sources of Capital Funds Expended**

Fare Revenues	\$0	0.0%
Local Funds	\$28,087	14.7%
State Funds	\$0	0.0%
Federal Assistance	\$163,088	85.3%
Other Funds	\$0	0.0%
<b>Total Capital Funds Expended</b>	<b>\$191,175</b>	<b>100.0%</b>

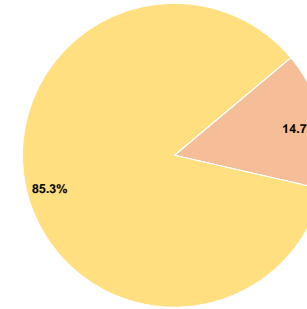
**Assets**

Revenue Vehicles	20
Service Vehicles	1
Facilities	1

**Operating Funding Sources**



**Capital Funding Sources**



**Performance Measure Targets - 2021**

Performance Measure - Asset Type - Target % not in State of Good Repair  
 Equipment - Automobiles - 100%  
 Equipment - Trucks and other Rubber Tire Vehicles - 50%  
 Facility - Administrative / Maintenance Facilities - 0%  
 Rolling Stock - AO - Automobile - 50%  
 Rolling Stock - BU - Bus - 5%  
 Rolling Stock - CU - Cutaway - 25%  
 Rolling Stock - MV - Minivan - 30%  
 Rolling Stock - SV - Sports Utility Vehicle - 50%  
 Rolling Stock - VN - Van - 25%

**Modal Characteristics**

**Operation Characteristics**

**Vehicles Operated at Maximum Service**

Mode	Directly Operated	Purchased Transportation	Operating Expenses	Fare Revenues	Uses of Capital Funds	Annual Unlinked Trips	Annual Vehicle Revenue Miles	Annual Vehicle Revenue Hours	Average Fleet Age in Years <sup>a</sup>
Demand Response	10	-	\$666,529	\$37,512	\$76,470	18,585	134,570	12,724	6.1
Bus	8	-	\$999,795	\$76,376	\$114,705	108,045	260,350	16,254	5.5
<b>Total</b>	<b>18</b>	<b>-</b>	<b>\$1,666,324</b>	<b>\$113,888</b>	<b>\$191,175</b>	<b>126,630</b>	<b>394,920</b>	<b>28,978</b>	

**Performance Measures**

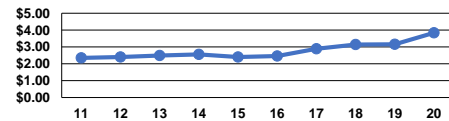
**Service Efficiency**

Mode	Operating Expenses per Vehicle Revenue Mile	Operating Expenses per Vehicle Revenue Hour
Demand Response	\$4.95	\$52.38
Bus	\$3.84	\$61.51
<b>Total</b>	<b>\$4.22</b>	<b>\$57.50</b>

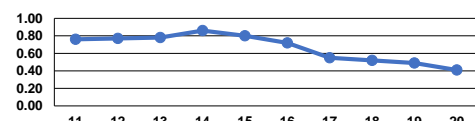
**Service Effectiveness**

Mode	Operating Expenses per Unlinked Passenger Trip	Unlinked Trips per Vehicle Revenue Mile	Unlinked Trips per Vehicle Revenue Hour
Demand Response	\$35.86	0.1	1.5
Bus	\$9.25	0.4	6.6
<b>Total</b>	<b>\$13.16</b>	<b>0.3</b>	<b>4.4</b>

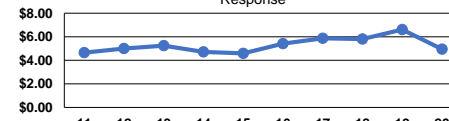
Operating Expense per Vehicle Revenue Mile: Bus



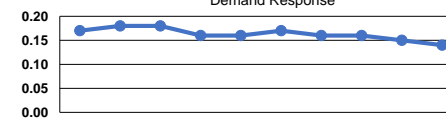
Unlinked Passenger Trips per Vehicle Revenue Mile: Bus



Operating Expense per Vehicle Revenue Mile: Demand Response



Unlinked Passenger Trips per Vehicle Revenue Mile: Demand Response



**Notes:**

<sup>a</sup>Demand Response - Taxi (DT) and non-dedicated fleets do not report fleet age data.