

**General Information**

**Federally Recognized Tribal Statistical Areas**  
 Spirit Lake Reservation, ND

**Service Consumption**  
 6,400 Annual Unlinked Trips (UPT)

**Service Supplied**  
 140,407 Annual Vehicle Revenue Miles (VRM)  
 9,592 Annual Vehicle Revenue Hours (VRH)

**Database Information**  
 NTDID: 88128  
 Reporter Type: Tribal Reporter

Asset Type: Tier II  
 Sponsor NTDID:

**Financial Information**

**Sources of Operating Funds Expended**

Fare Revenues	\$110,549	21.5%
Local Funds	\$215,681	41.9%
State Funds	\$1,323	0.3%
Federal Assistance	\$187,153	36.4%
Other Funds	\$0	0.0%
<b>Total Operating Funds Expended</b>	<b>\$514,706</b>	<b>100.0%</b>

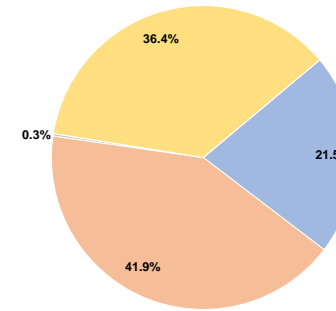
**Sources of Capital Funds Expended**

Fare Revenues	\$0
Local Funds	\$0
State Funds	\$0
Federal Assistance	\$0
Other Funds	\$0
<b>Total Capital Funds Expended</b>	<b>\$0</b>

**Assets**

Revenue Vehicles	7
Service Vehicles	0
Facilities	0

**Operating Funding Sources**



**Performance Measure Targets - 2021**

Performance Measure - Asset Type - Target % not in State of Good Repair  
 Rolling Stock - CU - Cutaway - 0%  
 Rolling Stock - MV - Minivan - 100%

**Modal Characteristics**

**Operation Characteristics**

**Vehicles Operated at Maximum Service**

Mode	Directly Operated	Purchased Transportation	Operating Expenses	Fare Revenues	Uses of Capital Funds	Annual Unlinked Trips	Annual Vehicle Revenue Miles	Annual Vehicle Revenue Hours	Average Fleet Age in Years <sup>a</sup>
Demand Response	5	-	\$514,706	\$110,549	\$0	6,400	140,407	9,592	1.9
<b>Total</b>	<b>5</b>	<b>-</b>	<b>\$514,706</b>	<b>\$110,549</b>	<b>\$0</b>	<b>6,400</b>	<b>140,407</b>	<b>9,592</b>	

**Performance Measures**

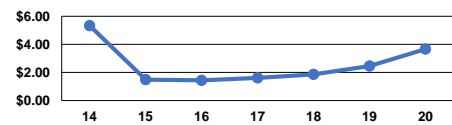
**Service Efficiency**

Mode	Operating Expenses per Vehicle Revenue Mile	Operating Expenses per Vehicle Revenue Hour
Demand Response	\$3.67	\$53.66
<b>Total</b>	<b>\$3.67</b>	<b>\$53.66</b>

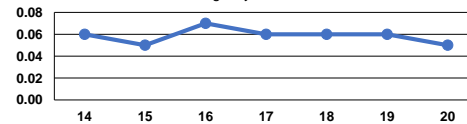
**Service Effectiveness**

Mode	Operating Expenses per Unlinked Passenger Trip	Unlinked Trips per Vehicle Revenue Mile	Unlinked Trips per Vehicle Revenue Hour
Demand Response	\$80.42	0.0	0.7
<b>Total</b>	<b>\$80.42</b>	<b>0.0</b>	<b>0.7</b>

Operating Expense per Vehicle Revenue Mile: Agency Total



Unlinked Passenger Trips per Vehicle Revenue Mile: Agency Total



**Notes:**

<sup>a</sup>Demand Response - Taxi (DT) and non-dedicated fleets do not report fleet age data.