

General Information

Federally Recognized Tribal Statistical Areas

Cheyenne River Reservation and Off-Reservation Trust Land, SD

Service Consumption

18,596 Annual Unlinked Trips (UPT)

Service Supplied

218,183 Annual Vehicle Revenue Miles (VRM)
 11,743 Annual Vehicle Revenue Hours (VRH)

Database Information

NTDID: 88158
 Reporter Type: Tribal Reporter

Asset Type: Tier II
 Sponsor NTDID:

Financial Information

Sources of Operating Funds Expended

Fare Revenues	\$12,761	1.2%
Local Funds	\$383,800	37.5%
State Funds	\$105,447	10.3%
Federal Assistance	\$520,627	50.9%
Other Funds	\$0	0.0%
Total Operating Funds Expended	\$1,022,635	100.0%

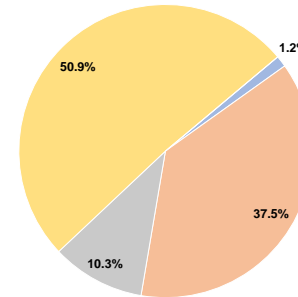
Sources of Capital Funds Expended

Fare Revenues	\$0	0.0%
Local Funds	\$0	0.0%
State Funds	\$0	0.0%
Federal Assistance	\$143,726	100.0%
Other Funds	\$0	0.0%
Total Capital Funds Expended	\$143,726	100.0%

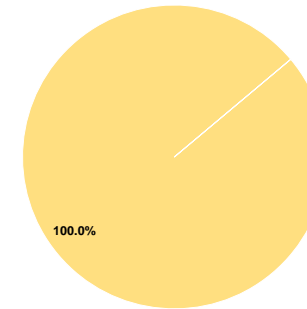
Assets

Revenue Vehicles	15
Service Vehicles	0
Facilities	1

Operating Funding Sources



Capital Funding Sources



Performance Measure Targets - 2021

Performance Measure - Asset Type - Target % not in State of Good Repair Facility - Administrative / Maintenance Facilities - 0%
 Rolling Stock - CU - Cutaway - 50%
 Rolling Stock - MV - Minivan - 20%
 Rolling Stock - VN - Van - 25%

Modal Characteristics

Operation Characteristics

Vehicles Operated at Maximum Service

Mode	Directly Operated	Purchased Transportation	Operating Expenses	Fare Revenues	Uses of Capital Funds	Annual Unlinked Trips	Annual Vehicle Revenue Miles	Annual Vehicle Revenue Hours	Average Fleet Age in Years ^a
Demand Response	-	9 ¹	\$1,022,635 ¹	\$12,761	\$143,726 ¹	18,596	218,183	11,743	4.8
Total	-	9	\$1,022,635	\$12,761	\$143,726	18,596	218,183	11,743	

Performance Measures

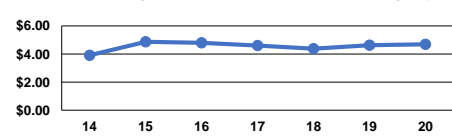
Service Efficiency

Mode	Operating Expenses per Vehicle Revenue Mile	Operating Expenses per Vehicle Revenue Hour
Demand Response	\$4.69	\$87.08
Total	\$4.69	\$87.08

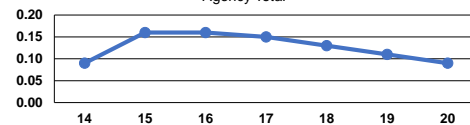
Service Effectiveness

Mode	Operating Expenses per Unlinked Passenger Trip	Unlinked Trips per Vehicle Revenue Mile	Unlinked Trips per Vehicle Revenue Hour
Demand Response	\$54.99	0.1	1.6
Total	\$54.99	0.1	1.6

Operating Expense per Vehicle Revenue Mile: Agency Total



Unlinked Passenger Trips per Vehicle Revenue Mile: Agency Total



Notes:

^aDemand Response - Taxi (DT) and non-dedicated fleets do not report fleet age data.

¹Includes data for a contract with another reporter.

*This agency has a purchased transportation relationship in which they buy service from CCTS d/b/a River Cities Transit (NTDID: 80171), and in which the data are captured in this report for mode DR/PT.

