

General Information

Federally Recognized Tribal Statistical Areas

Uintah and Ouray Reservation and Off-Reservation Trust Land, UT

Service Consumption

2,023 Annual Unlinked Trips (UPT)

Service Supplied

23,227 Annual Vehicle Revenue Miles (VRM)
 754 Annual Vehicle Revenue Hours (VRH)

Database Information

NTDID: 88200
 Reporter Type: Tribal Reporter

Asset Type: Tier II
 Sponsor NTDID: 8R06

Assets

Revenue Vehicles	6
Service Vehicles	1
Facilities	0

Financial Information

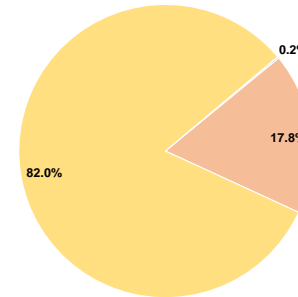
Sources of Operating Funds Expended

Fare Revenues	\$344	0.2%
Local Funds	\$32,988	17.8%
State Funds	\$0	0.0%
Federal Assistance	\$152,085	82.0%
Other Funds	\$0	0.0%
Total Operating Funds Expended	\$185,417	100.0%

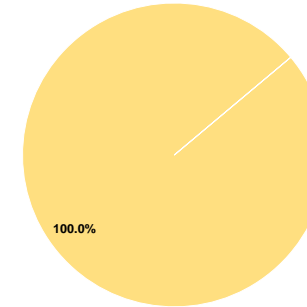
Sources of Capital Funds Expended

Fare Revenues	\$0	0.0%
Local Funds	\$0	0.0%
State Funds	\$0	0.0%
Federal Assistance	\$70,701	100.0%
Other Funds	\$0	0.0%
Total Capital Funds Expended	\$70,701	100.0%

Operating Funding Sources



Capital Funding Sources



Performance Measure Targets - 2021

Performance Measure - Asset Type - Target % not in State of Good Repair
 Equipment - Automobiles - 43%
 Equipment - Trucks and other Rubber Tire Vehicles - 0%
 Facility - Administrative / Maintenance Facilities - 0%
 Facility - Passenger / Parking Facilities - 0%
 Rolling Stock - BU - Bus - 14%
 Rolling Stock - CU - Cutaway - 6%
 Rolling Stock - MV - Minivan - 39%
 Rolling Stock - SV - Sports Utility Vehicle - 0%

Modal Characteristics

Operation Characteristics

Vehicles Operated at Maximum Service

Mode	Directly Operated	Purchased Transportation	Operating Expenses	Fare Revenues	Uses of Capital Funds	Annual Unlinked Trips	Annual Vehicle Revenue Miles	Annual Vehicle Revenue Hours	Average Fleet Age in Years ^a
Bus	6	-	\$185,417	\$344	\$70,701	2,023	23,227	754	8.8
Total	6	-	\$185,417	\$344	\$70,701	2,023	23,227	754	

Performance Measures

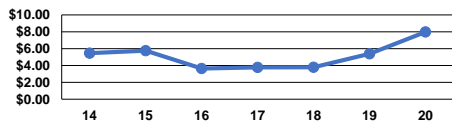
Service Efficiency

Mode	Operating Expenses per Vehicle Revenue Mile	Operating Expenses per Vehicle Revenue Hour
Bus	\$7.98	\$245.91
Total	\$7.98	\$245.91

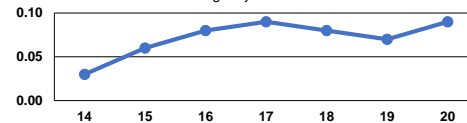
Service Effectiveness

Mode	Operating Expenses per Unlinked Passenger Trip	Unlinked Trips per Vehicle Revenue Mile	Unlinked Trips per Vehicle Revenue Hour
Bus	\$91.65	0.1	2.7
Total	\$91.65	0.1	2.7

Operating Expense per Vehicle Revenue Mile: Agency Total



Unlinked Passenger Trips per Vehicle Revenue Mile: Agency Total



Notes:

^aDemand Response - Taxi (DT) and non-dedicated fleets do not report fleet age data.