

General Information

Urbanized Area Statistics - 2010 Census
 Las Vegas-Henderson, NV
 417 **Square Miles**
 1,886,011 **Population**
 23 **Pop. Rank out of 498 UZAs**
Other UZAs Served
 0 Nevada Non-UZA

Service Consumption
 225,728,011 **Annual Passenger Miles (PMT)**
 56,896,575 **Annual Unlinked Trips (UPT)**
 169,088 **Average Weekday Unlinked Trips**
 141,084 **Average Saturday Unlinked Trips**
 117,877 **Average Sunday Unlinked Trips**

Database Information
 NTDID: 90045
 Reporter Type: Full Reporter
 Asset Type: Tier I (Fixed Route VOMS)
 Sponsor NTDID:

Service Area Statistics
 280 **Square Miles**
 2,008,655 **Population**

Service Supplied
 27,889,805 **Annual Vehicle Revenue Miles (VRM)**
 2,183,527 **Annual Vehicle Revenue Hours (VRH)**
 673 **Vehicles Operated in Maximum Service (VOMS)**
 861 **Vehicles Available for Maximum Service (VAMS)**

Assets
 Revenue Vehicles 781
 Service Vehicles 59
 Facilities 9
 Track Miles -
 Lane Miles -

Modal Characteristics

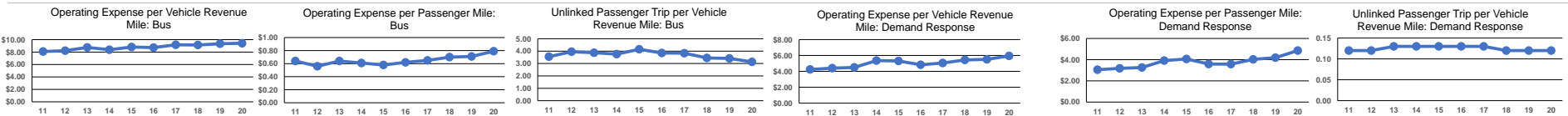
Modal Overview	Vehicles Operated in Maximum Service		Uses of Capital Funds					Total
	Directly Operated	Purchased Transportation	Revenue Vehicles	Systems and Guideways	Facilities and Stations	Other		
Demand Response	-	364	\$737,558	\$0	\$0	\$0	\$737,558	
Bus	-	309	\$4,096,624	\$1,672,764	\$11,249,372	\$66,001	\$17,823,319	
Total	-	673	\$4,834,182	\$1,672,764	\$11,249,372	\$66,001	\$17,823,319	

Operation Characteristics

Mode	Operating Expenses	Fare Revenues	Uses of Capital Funds	Annual Passenger Miles	Annual Unlinked Trips	Annual Vehicle Revenue Miles	Annual Vehicle Revenue Hours	Fixed Guideway Directional Route Miles	Vehicles Available for Maximum Service	Vehicles Operated in Maximum Service	Percent Spare Vehicles	Average Fleet Age in Years ^a
Demand Response	\$59,860,391	\$2,308,944	\$737,558	12,309,900	1,176,939	10,085,409	680,403	0.0	457	364	25.6%	2.9
Bus	\$167,662,728	\$49,514,535	\$17,084,761	213,418,111	55,719,636	17,804,396	1,503,124	71.2	404	309	30.7%	5.6
Total	\$227,523,119	\$51,823,479	\$17,823,319	225,728,011	56,896,575	27,889,805	2,183,527	71.2	861	673	21.8%	

Performance Measures

Mode	Service Efficiency		Mode	Service Effectiveness			
	Operating Expenses per Vehicle Revenue Mile	Operating Expenses per Vehicle Revenue Hour		Operating Expenses per Passenger Mile	Operating Expenses per Unlinked Passenger Trip	Unlinked Trips per Vehicle Revenue Mile	Unlinked Trips per Vehicle Revenue Hour
Demand Response	\$5.94	\$87.98	Demand Response	\$4.86	\$50.86	0.1	1.7
Bus	\$9.42	\$111.54	Bus	\$0.79	\$3.01	3.1	37.1
Total	\$8.16	\$104.20	Total	\$1.01	\$4.00	2.0	26.1



Notes:
^aDemand Response - Taxi (DT) and non-dedicated fleets do not report fleet age data.

Financial Information

Sources of Operating Funds Expended
 Fares and Directly Generated \$60,559,421 26.6%
 Local Funds \$109,544,256 48.1%
 State Funds \$9,063,845 4.0%
 Federal Assistance \$48,681,497 21.4%

Total Operating Funds Expended \$227,849,019 100.0%

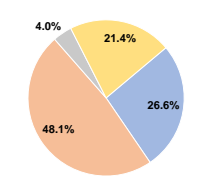
Sources of Capital Funds Expended
 Fares and Directly Generated \$0 0.0%
 Local Funds \$4,182,099 23.5%
 State Funds \$0 0.0%
 Federal Assistance \$13,640,220 76.5%

Total Capital Funds Expended \$17,822,319 100.0%

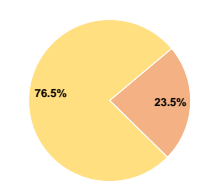
Summary of Operating Expenses (OE)

Labor \$24,971,047 11.0%
 Materials and Supplies \$9,528,309 4.2%
 Purchased Transportation \$158,163,591 69.5%
 Other Operating Expenses \$34,860,172 15.3%
Total Operating Expenses \$227,523,119 100.0%
 Reconciling OE Cash Expenditures \$325,900
 Purchased Transportation (Reported Separately) \$0

Operating Funding Sources



Capital Funding Sources



Performance Measure Targets - 2021

Performance Measure - Asset Type - Target % not in State of Good Repair
 Equipment - Trucks and other Rubber Tire Vehicles - 10%
 Facility - Administrative / Maintenance Facilities - 20%
 Facility - Passenger / Parking Facilities - 25%
 Rolling Stock - AB - Articulated Bus - 10%
 Rolling Stock - BU - Bus - 10%
 Rolling Stock - CU - Cutaway - 10%
 Rolling Stock - DB - Double Decker Bus - 10%