

**General Information**

**Urbanized Area (UZA) Statistics - 2010 Census**

Manteca, CA  
 22 Square Miles  
 83,578 Population  
 345 Pop. Rank out of 498 UZAs

**Service Area Statistics**

21 Square Miles  
 81,345 Population

**Service Consumption**

50,789 Annual Unlinked Trips (UPT)

**Service Supplied**

193,115 Annual Vehicle Revenue Miles (VRM)  
 15,716 Annual Vehicle Revenue Hours (VRH)

**Database Information**

NTDID: 90217  
 Reporter Type: Reduced Reporter  
 Asset Type: Tier II  
 Sponsor NTDID:

**Financial Information**

**Sources of Operating Funds Expended**

Fare Revenues	\$38,161	1.7%
Local Funds	\$0	0.0%
State Funds	\$1,338,772	59.6%
Federal Assistance	\$815,920	36.3%
Other Funds	\$53,040	2.4%
<b>Total Operating Funds Expended</b>	<b>\$2,245,893</b>	<b>100.0%</b>

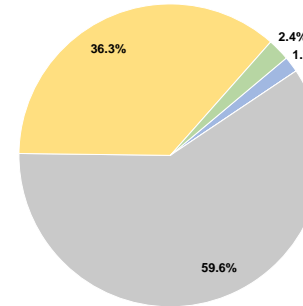
**Sources of Capital Funds Expended**

Fare Revenues	\$0
Local Funds	\$0
State Funds	\$0
Federal Assistance	\$0
Other Funds	\$0
<b>Total Capital Funds Expended</b>	<b>\$0</b>

**Assets**

Revenue Vehicles	9
Service Vehicles	8
Facilities	1

**Operating Funding Sources**



**Performance Measure Targets - 2021**

Performance Measure - Asset Type - Target % not in State of Good Repair  
 Equipment - Automobiles - 0%  
 Facility - Passenger / Parking Facilities - 0%  
 Rolling Stock - CU - Cutaway - 0%

**Modal Characteristics**

**Operation Characteristics**

**Vehicles Operated at Maximum Service**

Mode	Directly Operated	Purchased Transportation	Operating Expenses	Fare Revenues	Uses of Capital Funds	Annual Unlinked Trips	Annual Vehicle Revenue Miles	Annual Vehicle Revenue Hours	Average Fleet Age in Years <sup>a</sup>
Demand Response	-	2	\$449,179	\$11,722	\$0	7,540	28,645	3,100	2.0
Bus	-	4	\$1,796,714	\$26,439	\$0	43,249	164,470	12,616	2.0
<b>Total</b>	<b>-</b>	<b>6</b>	<b>\$2,245,893</b>	<b>\$38,161</b>	<b>\$0</b>	<b>50,789</b>	<b>193,115</b>	<b>15,716</b>	

**Performance Measures**

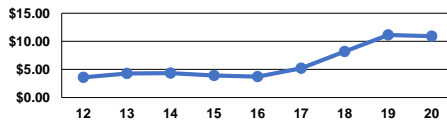
**Service Efficiency**

Mode	Operating Expenses per Vehicle Revenue Mile	Operating Expenses per Vehicle Revenue Hour
Demand Response	\$15.68	\$144.90
Bus	\$10.92	\$142.42
<b>Total</b>	<b>\$11.63</b>	<b>\$142.90</b>

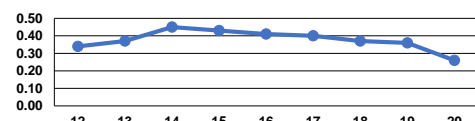
**Service Effectiveness**

Mode	Operating Expenses per Unlinked Passenger Trip	Unlinked Trips per Vehicle Revenue Mile	Unlinked Trips per Vehicle Revenue Hour
Demand Response	\$59.57	0.3	2.4
Bus	\$41.54	0.3	3.4
<b>Total</b>	<b>\$44.22</b>	<b>0.3</b>	<b>3.2</b>

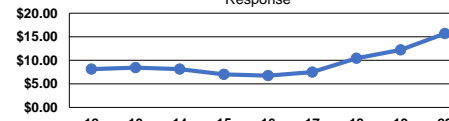
Operating Expense per Vehicle Revenue Mile: Bus



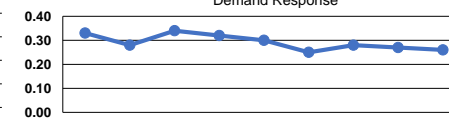
Unlinked Passenger Trips per Vehicle Revenue Mile: Bus



Operating Expense per Vehicle Revenue Mile: Demand Response



Unlinked Passenger Trips per Vehicle Revenue Mile: Demand Response



**Notes:**

<sup>a</sup>Demand Response - Taxi (DT) and non-dedicated fleets do not report fleet age data.