

**General Information**

**Urbanized Area (UZA) Statistics - 2010 Census**

Modesto, CA  
 92 Square Miles  
 358,172 Population  
 105 Pop. Rank out of 498 UZAs

**Other UZAs Served**

300 Turlock, CA, 0 California Non-UZA

**Service Area Statistics**

1,515 Square Miles  
 550,660 Population

**Service Consumption**

293,418 Annual Unlinked Trips (UPT)

**Service Supplied**

1,024,500 Annual Vehicle Revenue Miles (VRM)  
 59,494 Annual Vehicle Revenue Hours (VRH)

**Database Information**

NTDID: 90236  
 Reporter Type: Reduced Reporter  
 Asset Type: Tier II  
 Sponsor NTDID:

**Financial Information**

**Sources of Operating Funds Expended**

Fare Revenues	\$466,259	7.8%
Local Funds	\$4,486,316	74.6%
State Funds	\$60,832	1.0%
Federal Assistance	\$998,583	16.6%
Other Funds	\$0	0.0%
<b>Total Operating Funds Expended</b>	<b>\$6,011,990</b>	<b>100.0%</b>

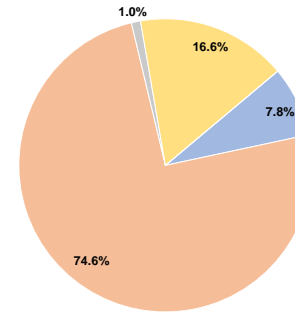
**Sources of Capital Funds Expended**

Fare Revenues	\$0	0.0%
Local Funds	\$5,119,701	97.3%
State Funds	\$144,320	2.7%
Federal Assistance	\$0	0.0%
Other Funds	\$0	0.0%
<b>Total Capital Funds Expended</b>	<b>\$5,264,021</b>	<b>100.0%</b>

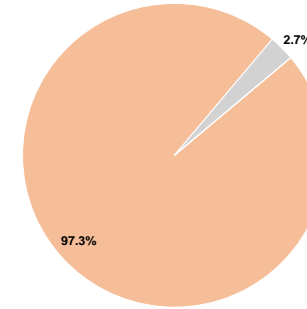
**Assets**

Revenue Vehicles	51
Service Vehicles	1
Facilities	1

**Operating Funding Sources**



**Capital Funding Sources**



**Performance Measure Targets - 2021**

Performance Measure - Asset Type - Target % not in State of Good Repair  
 Equipment - Trucks and other Rubber Tire Vehicles - 0%  
 Rolling Stock - BR - Over-the-road Bus - 0%  
 Rolling Stock - BU - Bus - 0%  
 Rolling Stock - CU - Cutaway - 15%

**Modal Characteristics**

**Operation Characteristics**

**Vehicles Operated at Maximum Service**

Mode	Directly Operated	Purchased Transportation	Operating Expenses	Fare Revenues	Uses of Capital Funds	Annual Unlinked Trips	Annual Vehicle Revenue Miles	Annual Vehicle Revenue Hours	Average Fleet Age in Years <sup>a</sup>
Commuter Bus	-	1	\$221,391	\$25,091	\$3,458,963	3,667	36,565	1,058	4.0
Demand Response	-	12	\$1,751,864	\$141,010	\$82,551	36,834	233,730	18,361	5.5
Bus	-	16	\$3,665,670	\$300,158	\$1,722,507	252,917	754,205	40,075	5.7
<b>Total</b>	<b>-</b>	<b>29</b>	<b>\$5,638,925</b>	<b>\$466,259</b>	<b>\$5,264,021</b>	<b>293,418</b>	<b>1,024,500</b>	<b>59,494</b>	

**Performance Measures**

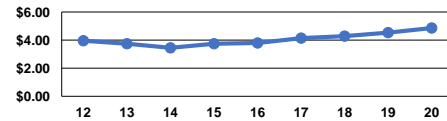
**Service Efficiency**

Mode	Operating Expenses per Vehicle Revenue Mile	Operating Expenses per Vehicle Revenue Hour
Commuter Bus	\$6.05	\$209.25
Demand Response	\$7.50	\$95.41
Bus	\$4.86	\$91.47
<b>Total</b>	<b>\$5.50</b>	<b>\$94.78</b>

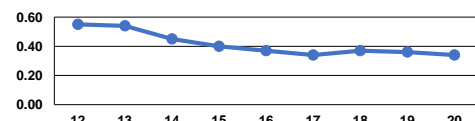
**Service Effectiveness**

Mode	Operating Expenses per Unlinked Passenger Trip	Unlinked Trips per Vehicle Revenue Mile	Unlinked Trips per Vehicle Revenue Hour
Commuter Bus	\$60.37	0.1	3.5
Demand Response	\$47.56	0.2	2.0
Bus	\$14.49	0.3	6.3
<b>Total</b>	<b>\$19.22</b>	<b>0.3</b>	<b>4.9</b>

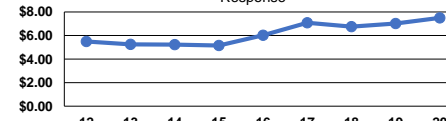
Operating Expense per Vehicle Revenue Mile: Bus



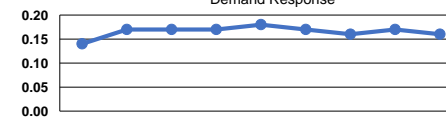
Unlinked Passenger Trips per Vehicle Revenue Mile: Bus



Operating Expense per Vehicle Revenue Mile: Demand Response



Unlinked Passenger Trips per Vehicle Revenue Mile: Demand Response



**Notes:**

<sup>a</sup>Demand Response - Taxi (DT) and non-dedicated fleets do not report fleet age data.

