

**General Information**

**Urbanized Area (UZA) Statistics - 2010 Census**

Los Angeles-Long Beach-Anaheim, CA  
 1,736 **Square Miles**  
 12,150,996 **Population**  
 2 **Pop. Rank out of 498 UZAs**

**Service Area Statistics**

9 **Square Miles**  
 50,004 **Population**

**Service Consumption**

100,357 **Annual Unlinked Trips (UPT)**

**Service Supplied**

210,205 **Annual Vehicle Revenue Miles (VRM)**  
 17,129 **Annual Vehicle Revenue Hours (VRH)**

**Database Information**

NTDID: 90259  
 Reporter Type: Reduced Reporter

Asset Type: Tier II  
 Sponsor NTDID: A0003

**Financial Information**

**Sources of Operating Funds Expended**

Fare Revenues	\$57,074	3.7%
Local Funds	\$1,487,244	96.3%
State Funds	\$0	0.0%
Federal Assistance	\$0	0.0%
Other Funds	\$0	0.0%
<b>Total Operating Funds Expended</b>	<b>\$1,544,318</b>	<b>100.0%</b>

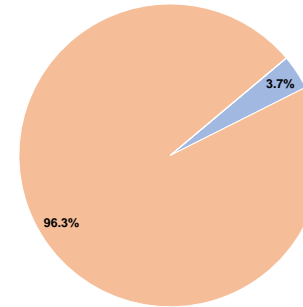
**Sources of Capital Funds Expended**

Fare Revenues	\$0
Local Funds	\$0
State Funds	\$0
Federal Assistance	\$0
Other Funds	\$0
<b>Total Capital Funds Expended</b>	<b>\$0</b>

**Assets**

Revenue Vehicles	16
Service Vehicles	0
Facilities	0

**Operating Funding Sources**



**Performance Measure Targets - 2021**

- Performance Measure - Asset Type - Target % not in State of Good Repair
- Equipment - Automobiles - 42%
- Equipment - Trucks and other Rubber Tire Vehicles - 100%
- Facility - Administrative / Maintenance Facilities - 3%
- Facility - Passenger / Parking Facilities - 5%
- Rolling Stock - AO - Automobile - 43%
- Rolling Stock - BU - Bus - 19%
- Rolling Stock - CU - Cutaway - 24%
- Rolling Stock - MV - Minivan - 9%
- Rolling Stock - VN - Van - 35%

**Modal Characteristics**

**Operation Characteristics**

**Vehicles Operated at Maximum Service**

Mode	Directly Operated	Purchased Transportation	Operating Expenses	Fare Revenues	Uses of Capital Funds	Annual Unlinked Trips	Annual Vehicle Revenue Miles	Annual Vehicle Revenue Hours	Average Fleet Age in Years <sup>a</sup>
Demand Response	-	10	\$387,468	\$16,805	\$0	21,505	54,146	5,348	0.0
Bus	-	6	\$1,071,454	\$40,269	\$0	78,852	156,059	11,781	15.0
<b>Total</b>	<b>-</b>	<b>16</b>	<b>\$1,458,922</b>	<b>\$57,074</b>	<b>\$0</b>	<b>100,357</b>	<b>210,205</b>	<b>17,129</b>	

**Performance Measures**

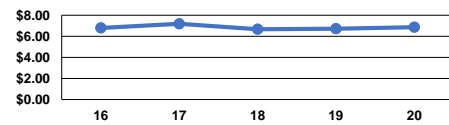
**Service Efficiency**

Mode	Operating Expenses per Vehicle Revenue Mile	Operating Expenses per Vehicle Revenue Hour
Demand Response	\$7.16	\$72.45
Bus	\$6.87	\$90.95
<b>Total</b>	<b>\$6.94</b>	<b>\$85.17</b>

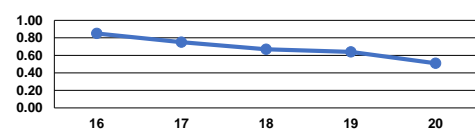
**Service Effectiveness**

Mode	Operating Expenses per Unlinked Passenger Trip	Unlinked Trips per Vehicle Revenue Mile	Unlinked Trips per Vehicle Revenue Hour
Demand Response	\$18.02	0.4	4.0
Bus	\$13.59	0.5	6.7
<b>Total</b>	<b>\$14.54</b>	<b>0.5</b>	<b>5.9</b>

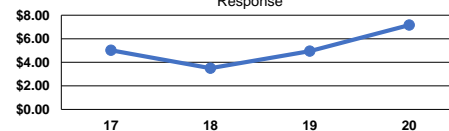
Operating Expense per Vehicle Revenue Mile: Bus



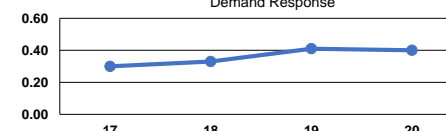
Unlinked Passenger Trips per Vehicle Revenue Mile: Bus



Operating Expense per Vehicle Revenue Mile: Demand Response



Unlinked Passenger Trips per Vehicle Revenue Mile: Demand Response



**Notes:**

<sup>a</sup>Demand Response - Taxi (DT) and non-dedicated fleets do not report fleet age data.