

**General Information**

**Federally Recognized Tribal Statistical Areas**  
 Salt River Reservation, AZ

**Service Consumption**  
 10,572 Annual Unlinked Trips (UPT)

**Service Supplied**  
 88,745 Annual Vehicle Revenue Miles (VRM)  
 5,920 Annual Vehicle Revenue Hours (VRH)

**Database Information**  
 NTDID: 99376  
 Reporter Type: Tribal Reporter

Asset Type: Tier II  
 Sponsor NTDID: 9R01

**Assets**  
 Revenue Vehicles 11  
 Service Vehicles 1  
 Facilities 2

**Financial Information**

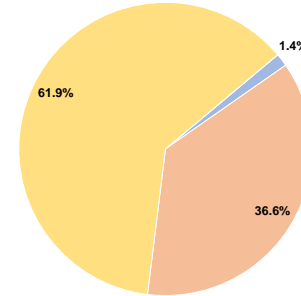
**Sources of Operating Funds Expended**

Fare Revenues	\$6,977	1.4%
Local Funds	\$179,714	36.6%
State Funds	\$0	0.0%
Federal Assistance	\$303,675	61.9%
Other Funds	\$0	0.0%
<b>Total Operating Funds Expended</b>	<b>\$490,366</b>	<b>100.0%</b>

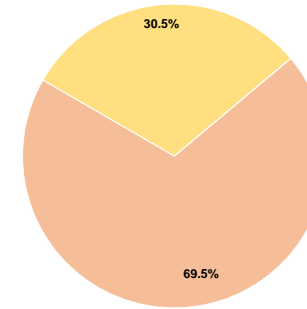
**Sources of Capital Funds Expended**

Fare Revenues	\$0	0.0%
Local Funds	\$17,280	69.5%
State Funds	\$0	0.0%
Federal Assistance	\$7,598	30.5%
Other Funds	\$0	0.0%
<b>Total Capital Funds Expended</b>	<b>\$24,878</b>	<b>100.0%</b>

**Operating Funding Sources**



**Capital Funding Sources**



**Performance Measure Targets - 2021**

- Performance Measure - Asset Type - Target % not in State of Good Repair
- Equipment - Automobiles - 50%
- Equipment - Trucks and other Rubber Tire Vehicles - 50%
- Facility - Administrative / Maintenance Facilities - 20%
- Rolling Stock - BR - Over-the-road Bus - 28%
- Rolling Stock - BU - Bus - 28%
- Rolling Stock - CU - Cutaway - 28%
- Rolling Stock - MV - Minivan - 28%
- Rolling Stock - VN - Van - 28%

**Modal Characteristics**

**Operation Characteristics**

**Vehicles Operated at Maximum Service**

Mode	Directly Operated	Purchased Transportation	Operating Expenses	Fare Revenues	Uses of Capital Funds	Annual Unlinked Trips	Annual Vehicle Revenue Miles	Annual Vehicle Revenue Hours	Average Fleet Age in Years <sup>a</sup>
Demand Response	8	-	\$490,366	\$6,977	\$24,878	10,572	88,745	5,920	5.5
<b>Total</b>	<b>8</b>	<b>-</b>	<b>\$490,366</b>	<b>\$6,977</b>	<b>\$24,878</b>	<b>10,572</b>	<b>88,745</b>	<b>5,920</b>	

**Performance Measures**

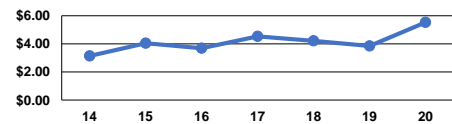
**Service Efficiency**

Mode	Operating Expenses per Vehicle Revenue Mile	Operating Expenses per Vehicle Revenue Hour
Demand Response	\$5.53	\$82.83
<b>Total</b>	<b>\$5.53</b>	<b>\$82.83</b>

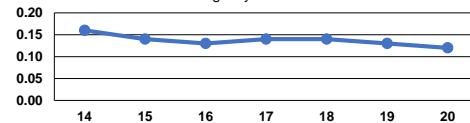
**Service Effectiveness**

Mode	Operating Expenses per Unlinked Passenger Trip	Unlinked Trips per Vehicle Revenue Mile	Unlinked Trips per Vehicle Revenue Hour
Demand Response	\$46.38	0.1	1.8
<b>Total</b>	<b>\$46.38</b>	<b>0.1</b>	<b>1.8</b>

Operating Expense per Vehicle Revenue Mile: Agency Total



Unlinked Passenger Trips per Vehicle Revenue Mile: Agency Total



**Notes:**

<sup>a</sup>Demand Response - Taxi (DT) and non-dedicated fleets do not report fleet age data.