

**General Information**

**Federally Recognized Tribal Statistical Areas**  
 Fort Hall Reservation and Off-Reservation Trust Land, ID

**Service Consumption**  
 17,800 Annual Unlinked Trips (UPT)

**Service Supplied**  
 219,209 Annual Vehicle Revenue Miles (VRM)  
 14,900 Annual Vehicle Revenue Hours (VRH)

**Database Information**  
 NTDID: 00031  
 Reporter Type: Tribal Reporter

Asset Type: Tier II  
 Sponsor NTDID:

**Financial Information**

**Sources of Operating Funds Expended**

Fare Revenues	\$0	0.0%
Local Funds	\$0	0.0%
State Funds	\$0	0.0%
Federal Assistance	\$612,437	100.0%
Other Funds	\$0	0.0%
<b>Total Operating Funds Expended</b>	<b>\$612,437</b>	<b>100.0%</b>

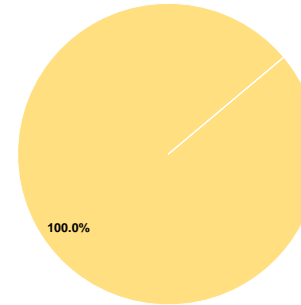
**Sources of Capital Funds Expended**

Fare Revenues	\$0
Local Funds	\$0
State Funds	\$0
Federal Assistance	\$0
Other Funds	\$0
<b>Total Capital Funds Expended</b>	<b>\$0</b>

**Assets**

Revenue Vehicles	16
Service Vehicles	0
Facilities	2

**Operating Funding Sources**



**Performance Measure Targets - 2022**

Performance Measure - Asset Type - Target % not in State of Good Repair  
 Facility - Administrative / Maintenance Facilities - 100%  
 Rolling Stock - CU - Cutaway - 80%  
 Rolling Stock - MV - Minivan - 60%

**Modal Characteristics**

**Operation Characteristics**

**Vehicles Operated at Maximum Service**

Mode	Directly Operated	Purchased Transportation	Operating Expenses	Fare Revenues	Uses of Capital Funds	Annual Unlinked Trips	Annual Vehicle Revenue Miles	Annual Vehicle Revenue Hours	Average Fleet Age in Years <sup>a</sup>
Bus	7	-	\$612,437	\$0	\$0	17,800	219,209	14,900	13.6
<b>Total</b>	<b>7</b>	<b>-</b>	<b>\$612,437</b>	<b>\$0</b>	<b>\$0</b>	<b>17,800</b>	<b>219,209</b>	<b>14,900</b>	

**Performance Measures**

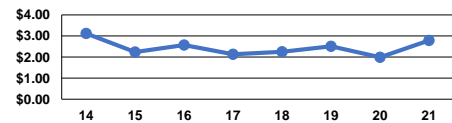
**Service Efficiency**

Mode	Operating Expenses per Vehicle Revenue Mile	Operating Expenses per Vehicle Revenue Hour
Bus	\$2.79	\$41.10
<b>Total</b>	<b>\$2.79</b>	<b>\$41.10</b>

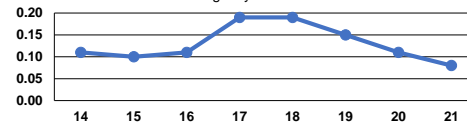
**Service Effectiveness**

Mode	Operating Expenses per Unlinked Passenger Trip	Unlinked Trips per Vehicle Revenue Mile	Unlinked Trips per Vehicle Revenue Hour
Bus	\$34.41	0.1	1.2
<b>Total</b>	<b>\$34.41</b>	<b>0.1</b>	<b>1.2</b>

Operating Expense per Vehicle Revenue Mile: Agency Total



Unlinked Passenger Trips per Vehicle Revenue Mile: Agency Total



**Notes:**

<sup>a</sup>Demand Response - Taxi (DR/TX) and non-dedicated fleets do not report fleet age data.