

General Information

Urbanized Area (UZA) Statistics - 2010 Census

Boston, MA-NH-RI
 1,873 Square Miles
 4,181,019 Population
 10 Pop. Rank out of 498 UZAs

Service Area Statistics

14 Square Miles
 14,329 Population

Service Consumption

57 Annual Unlinked Trips (UPT)

Service Supplied

182 Annual Vehicle Revenue Miles (VRM)
 29 Annual Vehicle Revenue Hours (VRH)

Database Information

NTDID: 10178
 Reporter Type: Reduced Reporter
 Asset Type: Tier II
 Sponsor NTDID:

Financial Information

Sources of Operating Funds Expended

Fare Revenues	\$66	0.4%
Local Funds	\$14,276	92.8%
State Funds	\$1,041	6.8%
Federal Assistance	\$0	0.0%
Other Funds	\$0	0.0%
Total Operating Funds Expended	\$15,383	100.0%

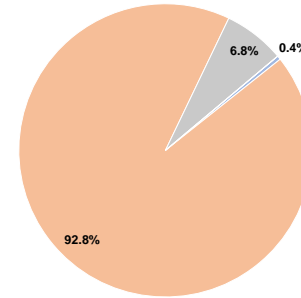
Sources of Capital Funds Expended

Fare Revenues	\$0	0.0%
Local Funds	\$56,153	100.0%
State Funds	\$0	0.0%
Federal Assistance	\$0	0.0%
Other Funds	\$0	0.0%
Total Capital Funds Expended	\$56,153	100.0%

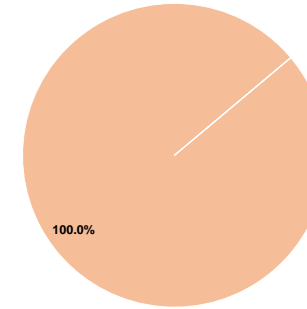
Assets

Revenue Vehicles	1
Service Vehicles	0
Facilities	0

Operating Funding Sources



Capital Funding Sources



Performance Measure Targets - 2022

Performance Measure - Asset Type - Target % not in State of Good Repair
 Rolling Stock - CU - Cutaway - 0%

Modal Characteristics

Operation Characteristics

Vehicles Operated at Maximum Service

Mode	Directly Operated	Purchased Transportation	Operating Expenses	Fare Revenues	Uses of Capital Funds	Annual Unlinked Trips	Annual Vehicle Revenue Miles	Annual Vehicle Revenue Hours	Average Fleet Age in Years ^a
Bus	1	-	\$15,383	\$66	\$56,153	57	182	29	1.0
Total	1	-	\$15,383	\$66	\$56,153	57	182	29	

Performance Measures

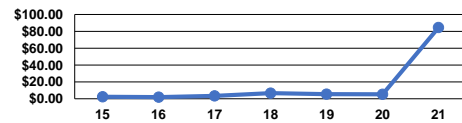
Service Efficiency

Mode	Operating Expenses per Vehicle Revenue Mile	Operating Expenses per Vehicle Revenue Hour
Bus	\$84.52	\$530.45
Total	\$84.52	\$530.45

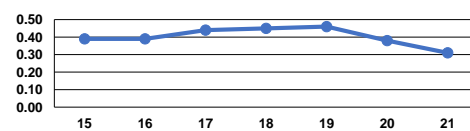
Service Effectiveness

Mode	Operating Expenses per Unlinked Passenger Trip	Unlinked Trips per Vehicle Revenue Mile	Unlinked Trips per Vehicle Revenue Hour
Bus	\$269.88	0.3	2.0
Total	\$269.88	0.3	2.0

Operating Expense per Vehicle Revenue Mile: Bus



Unlinked Passenger Trips per Vehicle Revenue Mile: Bus



Notes:

^aDemand Response - Taxi (DR/TX) and non-dedicated fleets do not report fleet age data.