

General Information

Urbanized Area (UZA) Statistics - 2010 Census

Staunton-Waynesboro, VA
 38 Square Miles
 56,611 Population
 461 Pop. Rank out of 498 UZAs

Other UZAs Served

0 Virginia Non-UZA

Service Area Statistics

25 Square Miles
 50,100 Population

Service Consumption

149,731 Annual Unlinked Trips (UPT)

Service Supplied

604,899 Annual Vehicle Revenue Miles (VRM)
 32,792 Annual Vehicle Revenue Hours (VRH)

Database Information

NTDID: 30989 Asset Type: Tier II
 Reporter Type: Reduced Reporter Sponsor NTDID: 3R06

Financial Information

Sources of Operating Funds Expended

Fare Revenues	\$1,900	0.1%
Local Funds	\$2,610	0.1%
State Funds	\$323,759	14.4%
Federal Assistance	\$1,921,392	85.4%
Other Funds	\$0	0.0%
Total Operating Funds Expended	\$2,249,661	100.0%

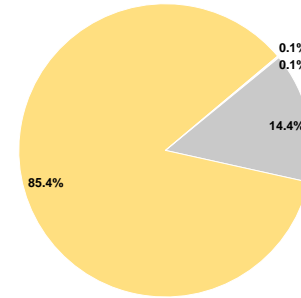
Sources of Capital Funds Expended

Fare Revenues	\$0	0.0%
Local Funds	\$549	20.0%
State Funds	\$0	0.0%
Federal Assistance	\$2,199	80.0%
Other Funds	\$0	0.0%
Total Capital Funds Expended	\$2,748	100.0%

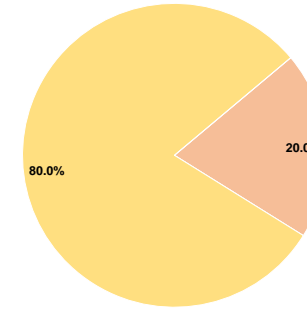
Assets

Revenue Vehicles	14
Service Vehicles	0
Facilities	1

Operating Funding Sources



Capital Funding Sources



Performance Measure Targets - 2022

- Performance Measure - Asset Type - Target % not in State of Good Repair
- Equipment - Automobiles - 25%
- Equipment - Trucks and other Rubber Tire Vehicles - 25%
- Facility - Administrative / Maintenance Facilities - 10%
- Facility - Passenger / Parking Facilities - 10%
- Rolling Stock - AB - Articulated Bus - 15%
- Rolling Stock - BR - Over-the-road Bus - 15%
- Rolling Stock - BU - Bus - 10%
- Rolling Stock - CU - Cutaway - 10%
- Rolling Stock - MV - Minivan - 25%
- Rolling Stock - VN - Van - 25%

Modal Characteristics

Operation Characteristics

Vehicles Operated at Maximum Service

Mode	Directly Operated	Purchased Transportation	Operating Expenses	Fare Revenues	Uses of Capital Funds	Annual Unlinked Trips	Annual Vehicle Revenue Miles	Annual Vehicle Revenue Hours	Average Fleet Age in Years ^a
Demand Response	-	2 ¹	\$182,625 ¹	\$0	\$0 ¹	7,715	52,808	3,898	4.0
Bus	-	12 ¹	\$1,222,184 ¹	\$1,900	\$2,748 ¹	142,016	552,091	28,894	4.9
Total	-	14	\$1,404,809	\$1,900	\$2,748	149,731	604,899	32,792	

Performance Measures

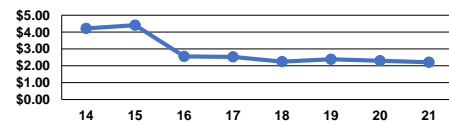
Service Efficiency

Mode	Operating Expenses per Vehicle Revenue Mile	Operating Expenses per Vehicle Revenue Hour
Demand Response	\$3.46	\$46.85
Bus	\$2.21	\$42.30
Total	\$2.32	\$42.84

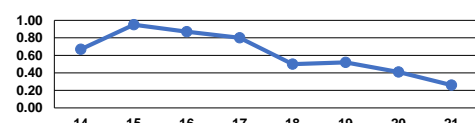
Service Effectiveness

Mode	Operating Expenses per Unlinked Passenger Trip	Unlinked Trips per Vehicle Revenue Mile	Unlinked Trips per Vehicle Revenue Hour
Demand Response	\$23.67	0.1	2.0
Bus	\$8.61	0.3	4.9
Total	\$9.38	0.2	4.6

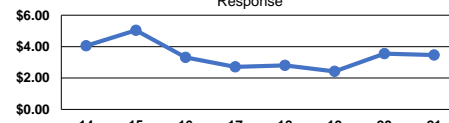
Operating Expense per Vehicle Revenue Mile: Bus



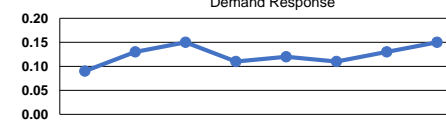
Unlinked Passenger Trips per Vehicle Revenue Mile: Bus



Operating Expense per Vehicle Revenue Mile: Demand Response



Unlinked Passenger Trips per Vehicle Revenue Mile: Demand Response



Notes:

^aDemand Response - Taxi (DR/TX) and non-dedicated fleets do not report fleet age data.

¹Includes data for a contract with another reporter.

*This agency has a purchased transportation relationship in which they buy service from VRT-Staunton Region (NTDID: 30125), and in which the data are captured in this report for mode DR/PT.

*This agency has a purchased transportation relationship in which they buy service from VRT-Staunton Region (NTDID: 30125), and in which the data are captured in this report for mode MB/PT.

