

**General Information**

**Urbanized Area (UZA) Statistics - 2010 Census**

Gadsden, AL  
 72 **Square Miles**  
 64,172 **Population**  
 426 **Pop. Rank out of 498 UZAs**

**Service Area Statistics**

37 **Square Miles**  
 61,709 **Population**

**Service Consumption**

62,014 **Annual Unlinked Trips (UPT)**

**Service Supplied**

216,602 **Annual Vehicle Revenue Miles (VRM)**  
 16,312 **Annual Vehicle Revenue Hours (VRH)**

**Database Information**

NTDID: 40049  
 Reporter Type: Reduced Reporter

Asset Type: Tier II  
 Sponsor NTDID:

**Financial Information**

**Sources of Operating Funds Expended**

Fare Revenues	\$0	0.0%
Local Funds	\$142,916	14.2%
State Funds	\$0	0.0%
Federal Assistance	\$860,993	85.8%
Other Funds	\$0	0.0%
<b>Total Operating Funds Expended</b>	<b>\$1,003,909</b>	<b>100.0%</b>

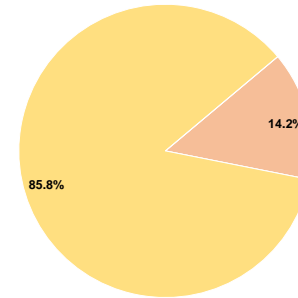
**Sources of Capital Funds Expended**

Fare Revenues	\$0	0.0%
Local Funds	\$157,146	20.0%
State Funds	\$0	0.0%
Federal Assistance	\$628,582	80.0%
Other Funds	\$0	0.0%
<b>Total Capital Funds Expended</b>	<b>\$785,728</b>	<b>100.0%</b>

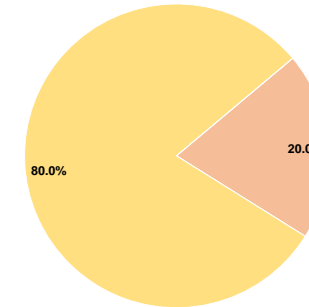
**Assets**

Revenue Vehicles	18
Service Vehicles	2
Facilities	0

**Operating Funding Sources**



**Capital Funding Sources**



**Performance Measure Targets - 2022**

Performance Measure - Asset Type - Target % not in State of Good Repair  
 Equipment - Automobiles - 0%  
 Equipment - Trucks and other Rubber Tire Vehicles - 0%  
 Rolling Stock - CU - Cutaway - 13%

**Modal Characteristics**

**Operation Characteristics**

**Vehicles Operated at Maximum Service**

Mode	Directly Operated	Purchased Transportation	Operating Expenses	Fare Revenues	Uses of Capital Funds	Annual Unlinked Trips	Annual Vehicle Revenue Miles	Annual Vehicle Revenue Hours	Average Fleet Age in Years <sup>a</sup>
Demand Response	8	-	\$582,267	\$0	\$612,867	24,955	139,676	10,552	5.1
Bus	6	-	\$421,642	\$0	\$172,861	37,059	76,926	5,760	4.5
<b>Total</b>	<b>14</b>	<b>-</b>	<b>\$1,003,909</b>	<b>\$0</b>	<b>\$785,728</b>	<b>62,014</b>	<b>216,602</b>	<b>16,312</b>	

**Performance Measures**

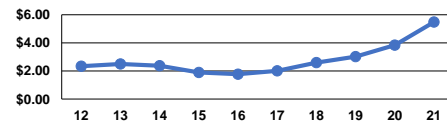
**Service Efficiency**

Mode	Operating Expenses per Vehicle Revenue Mile	Operating Expenses per Vehicle Revenue Hour
Demand Response	\$4.17	\$55.18
Bus	\$5.48	\$73.20
<b>Total</b>	<b>\$4.63</b>	<b>\$61.54</b>

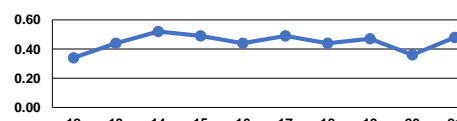
**Service Effectiveness**

Mode	Operating Expenses per Unlinked Passenger Trip	Unlinked Trips per Vehicle Revenue Mile	Unlinked Trips per Vehicle Revenue Hour
Demand Response	\$23.33	0.2	2.4
Bus	\$11.38	0.5	6.4
<b>Total</b>	<b>\$16.19</b>	<b>0.3</b>	<b>3.8</b>

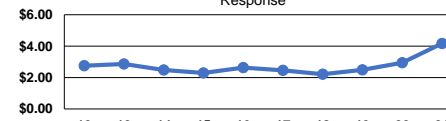
Operating Expense per Vehicle Revenue Mile: Bus



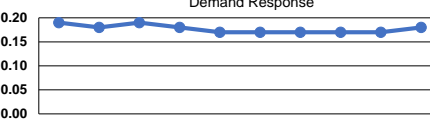
Unlinked Passenger Trips per Vehicle Revenue Mile: Bus



Operating Expense per Vehicle Revenue Mile: Demand Response



Unlinked Passenger Trips per Vehicle Revenue Mile: Demand Response



**Notes:**

<sup>a</sup>Demand Response - Taxi (DR/TX) and non-dedicated fleets do not report fleet age data.