

General Information

Urbanized Area (UZA) Statistics - 2010 Census

Florence, SC
 71 Square Miles
 89,557 Population
 325 Pop. Rank out of 498 UZAs

Other UZAs Served

0 South Carolina Non-UZA

Service Area Statistics

3,563 Square Miles
 335,620 Population

Service Consumption

223,609 Annual Unlinked Trips (UPT)

Service Supplied

796,557 Annual Vehicle Revenue Miles (VRM)
 46,021 Annual Vehicle Revenue Hours (VRH)

Database Information

NTDID: 40056
 Reporter Type: Reduced Reporter
 Asset Type: Tier II
 Sponsor NTDID: 4R07

Financial Information

Sources of Operating Funds Expended

Fare Revenues	\$178,398	4.3%
Local Funds	\$817,172	19.7%
State Funds	\$57,842	1.4%
Federal Assistance	\$3,025,949	72.8%
Other Funds	\$74,445	1.8%
Total Operating Funds Expended	\$4,153,806	100.0%

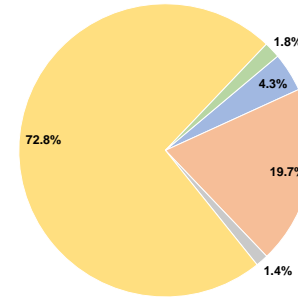
Sources of Capital Funds Expended

Fare Revenues	\$0	0.0%
Local Funds	\$0	0.0%
State Funds	\$202,251	8.1%
Federal Assistance	\$2,297,255	91.9%
Other Funds	\$0	0.0%
Total Capital Funds Expended	\$2,499,506	100.0%

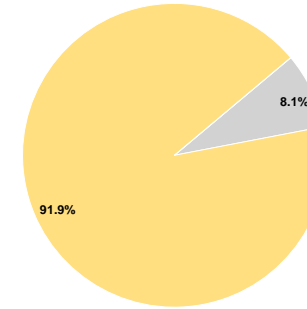
Assets

Revenue Vehicles	43
Service Vehicles	3
Facilities	2

Operating Funding Sources



Capital Funding Sources



Performance Measure Targets - 2022

- Performance Measure - Asset Type - Target % not in State of Good Repair
- Equipment - Automobiles - 30%
- Equipment - Trucks and other Rubber Tire Vehicles - 30%
- Facility - Administrative / Maintenance Facilities - 0%
- Facility - Passenger / Parking Facilities - 0%
- Rolling Stock - BR - Over-the-road Bus - 15%
- Rolling Stock - BU - Bus - 13%
- Rolling Stock - CU - Cutaway - 20%
- Rolling Stock - MV - Minivan - 10%
- Rolling Stock - VN - Van - 10%

Modal Characteristics

Operation Characteristics

Vehicles Operated at Maximum Service

Mode	Directly Operated	Purchased Transportation	Operating Expenses	Fare Revenues	Uses of Capital Funds	Annual Unlinked Trips	Annual Vehicle Revenue Miles	Annual Vehicle Revenue Hours	Average Fleet Age in Years ^a
Demand Response	5	-	\$245,075	\$2,246	\$147,471	8,879	63,392	3,890	6.2
Bus	19	-	\$3,908,731	\$176,152	\$2,352,035	214,730	733,165	42,131	6.1
Total	24	-	\$4,153,806	\$178,398	\$2,499,506	223,609	796,557	46,021	

Performance Measures

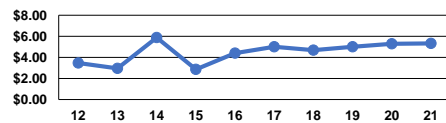
Service Efficiency

Mode	Operating Expenses per Vehicle Revenue Mile	Operating Expenses per Vehicle Revenue Hour
Demand Response	\$3.87	\$63.00
Bus	\$5.33	\$92.78
Total	\$5.21	\$90.26

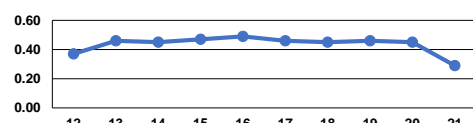
Service Effectiveness

Mode	Operating Expenses per Unlinked Passenger Trip	Unlinked Trips per Vehicle Revenue Mile	Unlinked Trips per Vehicle Revenue Hour
Demand Response	\$27.60	0.1	2.3
Bus	\$18.20	0.3	5.1
Total	\$18.58	0.3	4.9

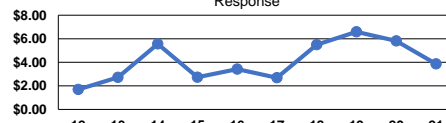
Operating Expense per Vehicle Revenue Mile: Bus



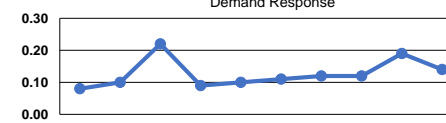
Unlinked Passenger Trips per Vehicle Revenue Mile: Bus



Operating Expense per Vehicle Revenue Mile: Demand Response



Unlinked Passenger Trips per Vehicle Revenue Mile: Demand Response



Notes:

^aDemand Response - Taxi (DR/TX) and non-dedicated fleets do not report fleet age data.