

General Information

Urbanized Area (UZA) Statistics - 2010 Census

San Juan, PR
 867 **Square Miles**
 2,148,346 **Population**
 21 **Pop. Rank out of 498 UZAs**

Service Area Statistics

46 **Square Miles**
 54,000 **Population**

Service Consumption

16,349 **Annual Unlinked Trips (UPT)**

Service Supplied

59,725 **Annual Vehicle Revenue Miles (VRM)**
 4,613 **Annual Vehicle Revenue Hours (VRH)**

Database Information

NTDID: 40117
 Reporter Type: Reduced Reporter

Asset Type: Tier II
 Sponsor NTDID: 4R09

Financial Information

Sources of Operating Funds Expended

Fare Revenues	\$0	0.0%
Local Funds	\$185,077	27.2%
State Funds	\$0	0.0%
Federal Assistance	\$494,751	72.8%
Other Funds	\$0	0.0%
Total Operating Funds Expended	\$679,828	100.0%

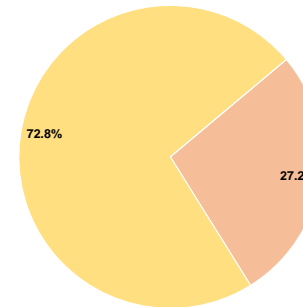
Sources of Capital Funds Expended

Fare Revenues	\$0
Local Funds	\$0
State Funds	\$0
Federal Assistance	\$0
Other Funds	\$0
Total Capital Funds Expended	\$0

Assets

Revenue Vehicles	10
Service Vehicles	1
Facilities	4

Operating Funding Sources



Performance Measure Targets - 2022

Performance Measure - Asset Type - Target % not in State of Good Repair
 Equipment - Automobiles - 49%
 Equipment - Trucks and other Rubber Tire Vehicles - 38%
 Facility - Administrative / Maintenance Facilities - 0%
 Facility - Passenger / Parking Facilities - 12%
 Rolling Stock - AO - Automobile - 100%
 Rolling Stock - BU - Bus - 46%
 Rolling Stock - CU - Cutaway - 38%
 Rolling Stock - FB - Ferryboat - 0%
 Rolling Stock - SV - Sports Utility Vehicle - 50%
 Rolling Stock - VN - Van - 41%

Modal Characteristics

Operation Characteristics

Vehicles Operated at Maximum Service

Mode	Directly Operated	Purchased Transportation	Operating Expenses	Fare Revenues	Uses of Capital Funds	Annual Unlinked Trips	Annual Vehicle Revenue Miles	Annual Vehicle Revenue Hours	Average Fleet Age in Years ^a
Demand Response	4	-	\$136,137	\$0	\$0	1,591	19,536	1,456	6.5
Bus	4	-	\$543,691	\$0	\$0	14,758	40,189	3,157	10.8
Total	8	-	\$679,828	\$0	\$0	16,349	59,725	4,613	

Performance Measures

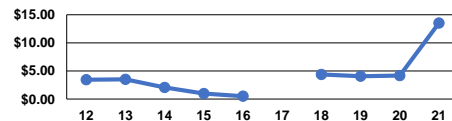
Service Efficiency

Mode	Operating Expenses per Vehicle Revenue Mile	Operating Expenses per Vehicle Revenue Hour
Demand Response	\$6.97	\$93.50
Bus	\$13.53	\$172.22
Total	\$11.38	\$147.37

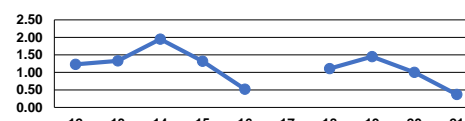
Service Effectiveness

Mode	Operating Expenses per Unlinked Passenger Trip	Unlinked Trips per Vehicle Revenue Mile	Unlinked Trips per Vehicle Revenue Hour
Demand Response	\$85.57	0.1	1.1
Bus	\$36.84	0.4	4.7
Total	\$41.58	0.3	3.5

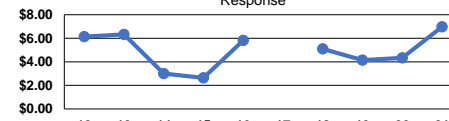
Operating Expense per Vehicle Revenue Mile: Bus



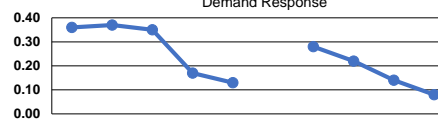
Unlinked Passenger Trips per Vehicle Revenue Mile: Bus



Operating Expense per Vehicle Revenue Mile: Demand Response



Unlinked Passenger Trips per Vehicle Revenue Mile: Demand Response



Notes:

^aDemand Response - Taxi (DR/TX) and non-dedicated fleets do not report fleet age data.