

General Information

Urbanized Area (UZA) Statistics - 2010 Census

San Juan, PR
867 **Square Miles**
2,148,346 **Population**
21 **Pop. Rank out of 498 UZAs**

Service Area Statistics

27 **Square Miles**
38,155 **Population**

Service Consumption

25,007 **Annual Unlinked Trips (UPT)**

Service Supplied

53,003 **Annual Vehicle Revenue Miles (VRM)**
5,197 **Annual Vehicle Revenue Hours (VRH)**

Database Information

NTDID: 40165
Reporter Type: Reduced Reporter

Asset Type: Tier II
Sponsor NTDID: 4R09

Assets
Revenue Vehicles: 9
Service Vehicles: 0
Facilities: 1

Financial Information

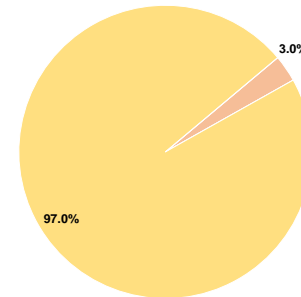
Sources of Operating Funds Expended

Fare Revenues	\$0	0.0%
Local Funds	\$7,146	3.0%
State Funds	\$0	0.0%
Federal Assistance	\$233,595	97.0%
Other Funds	\$0	0.0%
Total Operating Funds Expended	\$240,741	100.0%

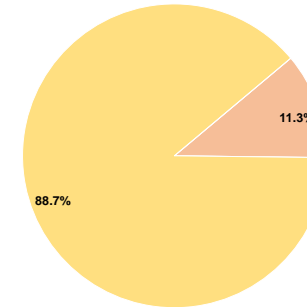
Sources of Capital Funds Expended

Fare Revenues	\$0	0.0%
Local Funds	\$33,702	11.3%
State Funds	\$0	0.0%
Federal Assistance	\$264,478	88.7%
Other Funds	\$0	0.0%
Total Capital Funds Expended	\$298,180	100.0%

Operating Funding Sources



Capital Funding Sources



Performance Measure Targets - 2022

Performance Measure - Asset Type - Target % not in State of Good Repair
Equipment - Automobiles - 49%
Equipment - Trucks and other Rubber Tire Vehicles - 38%
Facility - Administrative / Maintenance Facilities - 0%
Facility - Passenger / Parking Facilities - 12%
Rolling Stock - AO - Automobile - 100%
Rolling Stock - BU - Bus - 46%
Rolling Stock - CU - Cutaway - 38%
Rolling Stock - FB - Ferryboat - 0%
Rolling Stock - SV - Sports Utility Vehicle - 50%
Rolling Stock - VN - Van - 41%

Modal Characteristics

Operation Characteristics

Vehicles Operated at Maximum Service

Mode	Directly Operated	Purchased Transportation	Operating Expenses	Fare Revenues	Uses of Capital Funds	Annual Unlinked Trips	Annual Vehicle Revenue Miles	Annual Vehicle Revenue Hours	Average Fleet Age in Years ^a
Demand Response	2	-	\$78,604	\$0	\$0	1,776	13,143	1,122	13.0
Bus	5	-	\$162,137	\$0	\$298,180	23,231	39,860	4,075	6.6
Total	7	-	\$240,741	\$0	\$298,180	25,007	53,003	5,197	

Performance Measures

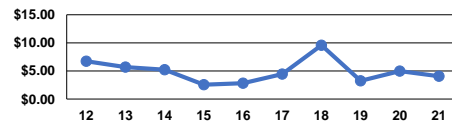
Service Efficiency

Mode	Operating Expenses per Vehicle Revenue Mile	Operating Expenses per Vehicle Revenue Hour
Demand Response	\$5.98	\$70.06
Bus	\$4.07	\$39.79
Total	\$4.54	\$46.32

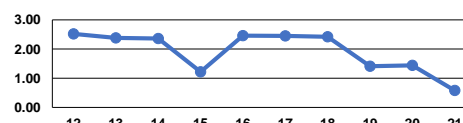
Service Effectiveness

Mode	Operating Expenses per Unlinked Passenger Trip	Unlinked Trips per Vehicle Revenue Mile	Unlinked Trips per Vehicle Revenue Hour
Demand Response	\$44.26	0.1	1.6
Bus	\$6.98	0.6	5.7
Total	\$9.63	0.5	4.8

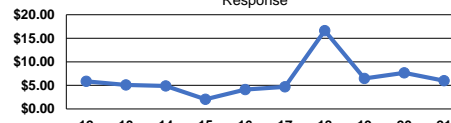
Operating Expense per Vehicle Revenue Mile: Bus



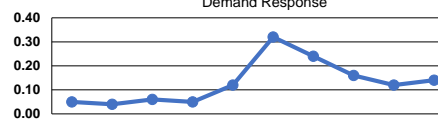
Unlinked Passenger Trips per Vehicle Revenue Mile: Bus



Operating Expense per Vehicle Revenue Mile: Demand Response



Unlinked Passenger Trips per Vehicle Revenue Mile: Demand Response



Notes:

^aDemand Response - Taxi (DR/TX) and non-dedicated fleets do not report fleet age data.