

**General Information**

**Urbanized Area (UZA) Statistics - 2010 Census**

Louisville/Jefferson County, KY-IN  
 477 **Square Miles**  
 972,546 **Population**  
 43 **Pop. Rank out of 498 UZAs**

**Other UZAs Served**

0 Kentucky Non-UZA

**Service Area Statistics**

7 **Square Miles**  
 8,082 **Population**

**Service Consumption**

10,939 **Annual Unlinked Trips (UPT)**

**Service Supplied**

33,953 **Annual Vehicle Revenue Miles (VRM)**  
 2,964 **Annual Vehicle Revenue Hours (VRH)**

**Database Information**

NTDID: 40218 **Asset Type:** Tier II  
**Reporter Type:** Reduced Reporter **Sponsor NTDID:**

**Financial Information**

**Sources of Operating Funds Expended**

Fare Revenues	\$5,208	3.4%
Local Funds	\$0	0.0%
State Funds	\$0	0.0%
Federal Assistance	\$149,286	96.6%
Other Funds	\$0	0.0%
<b>Total Operating Funds Expended</b>	<b>\$154,494</b>	<b>100.0%</b>

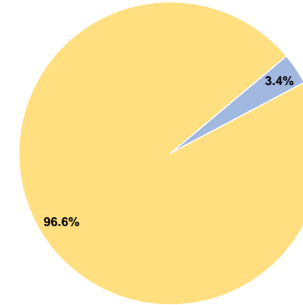
**Sources of Capital Funds Expended**

Fare Revenues	\$0
Local Funds	\$0
State Funds	\$0
Federal Assistance	\$0
Other Funds	\$0
<b>Total Capital Funds Expended</b>	<b>\$0</b>

**Assets**

Revenue Vehicles	3
Service Vehicles	0
Facilities	0

**Operating Funding Sources**



**Performance Measure Targets - 2022**

Performance Measure - Asset Type - Target % not in State of Good Repair  
 Rolling Stock - CU - Cutaway - 0%

**Modal Characteristics**

**Operation Characteristics**

**Vehicles Operated at Maximum Service**

Mode	Directly Operated	Purchased Transportation	Operating Expenses	Fare Revenues	Uses of Capital Funds	Annual Unlinked Trips	Annual Vehicle Revenue Miles	Annual Vehicle Revenue Hours	Average Fleet Age in Years <sup>a</sup>
Bus	1	-	\$154,494	\$5,208	\$0	10,939	33,953	2,964	5.7
<b>Total</b>	<b>1</b>	<b>-</b>	<b>\$154,494</b>	<b>\$5,208</b>	<b>\$0</b>	<b>10,939</b>	<b>33,953</b>	<b>2,964</b>	

**Performance Measures**

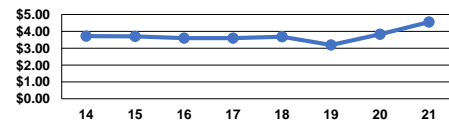
**Service Efficiency**

Mode	Operating Expenses per Vehicle Revenue Mile	Operating Expenses per Vehicle Revenue Hour
Bus	\$4.55	\$52.12
<b>Total</b>	<b>\$4.55</b>	<b>\$52.12</b>

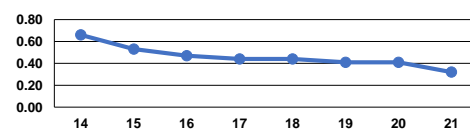
**Service Effectiveness**

Mode	Operating Expenses per Unlinked Passenger Trip	Unlinked Trips per Vehicle Revenue Mile	Unlinked Trips per Vehicle Revenue Hour
Bus	\$14.12	0.3	3.7
<b>Total</b>	<b>\$14.12</b>	<b>0.3</b>	<b>3.7</b>

Operating Expense per Vehicle Revenue Mile: Bus



Unlinked Passenger Trips per Vehicle Revenue Mile: Bus



**Notes:**

<sup>a</sup>Demand Response - Taxi (DR/TX) and non-dedicated fleets do not report fleet age data.