

**General Information**

**Urbanized Area (UZA) Statistics - 2010 Census**

Alexandria, LA  
 66 Square Miles  
 82,804 Population  
 346 Pop. Rank out of 498 UZAs

**Service Area Statistics**

28 Square Miles  
 62,924 Population

**Service Consumption**

325,969 Annual Unlinked Trips (UPT)

**Service Supplied**

373,707 Annual Vehicle Revenue Miles (VRM)  
 34,895 Annual Vehicle Revenue Hours (VRH)

**Database Information**

NTDID: 60025  
 Reporter Type: Reduced Reporter  
 Asset Type: Tier II  
 Sponsor NTDID:

**Financial Information**

**Sources of Operating Funds Expended**

Fare Revenues	\$208,862	7.4%
Local Funds	\$955,579	33.7%
State Funds	\$152,686	5.4%
Federal Assistance	\$1,516,667	53.5%
Other Funds	\$0	0.0%
<b>Total Operating Funds Expended</b>	<b>\$2,833,794</b>	<b>100.0%</b>

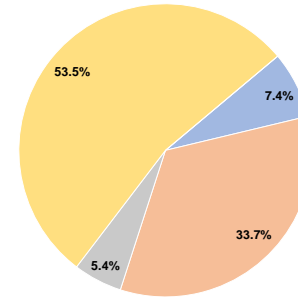
**Sources of Capital Funds Expended**

Fare Revenues	\$0	0.0%
Local Funds	\$75,061	17.7%
State Funds	\$0	0.0%
Federal Assistance	\$350,200	82.3%
Other Funds	\$0	0.0%
<b>Total Capital Funds Expended</b>	<b>\$425,261</b>	<b>100.0%</b>

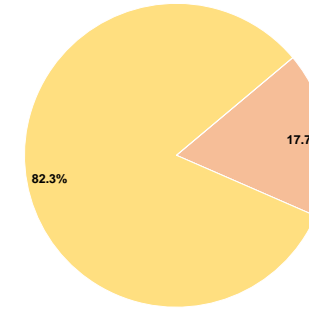
**Assets**

Revenue Vehicles	18
Service Vehicles	4
Facilities	3

**Operating Funding Sources**



**Capital Funding Sources**



**Performance Measure Targets - 2022**

Performance Measure - Asset Type - Target % not in State of Good Repair  
 Equipment - Trucks and other Rubber Tire Vehicles - 0%  
 Facility - Administrative / Maintenance Facilities - 50%  
 Facility - Passenger / Parking Facilities - 100%  
 Rolling Stock - BU - Bus - 0%  
 Rolling Stock - CU - Cutaway - 0%  
 Rolling Stock - VN - Van - 0%

**Modal Characteristics**

**Operation Characteristics**

**Vehicles Operated at Maximum Service**

Mode	Directly Operated	Purchased Transportation	Operating Expenses	Fare Revenues	Uses of Capital Funds	Annual Unlinked Trips	Annual Vehicle Revenue Miles	Annual Vehicle Revenue Hours	Average Fleet Age in Years <sup>a</sup>
Demand Response	1	-	\$566,759	\$3,623	\$0	3,068	29,119	3,393	12.0
Bus	8	-	\$2,267,035	\$205,239	\$425,261	322,901	344,588	31,502	7.3
<b>Total</b>	<b>9</b>	<b>-</b>	<b>\$2,833,794</b>	<b>\$208,862</b>	<b>\$425,261</b>	<b>325,969</b>	<b>373,707</b>	<b>34,895</b>	

**Performance Measures**

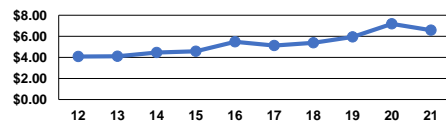
**Service Efficiency**

Mode	Operating Expenses per Vehicle Revenue Mile	Operating Expenses per Vehicle Revenue Hour
Demand Response	\$19.46	\$167.04
Bus	\$6.58	\$71.96
<b>Total</b>	<b>\$7.58</b>	<b>\$81.21</b>

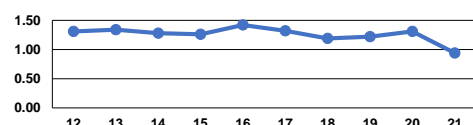
**Service Effectiveness**

Mode	Operating Expenses per Unlinked Passenger Trip	Unlinked Trips per Vehicle Revenue Mile	Unlinked Trips per Vehicle Revenue Hour
Demand Response	\$184.73	0.1	0.9
Bus	\$7.02	0.9	10.3
<b>Total</b>	<b>\$8.69</b>	<b>0.9</b>	<b>9.3</b>

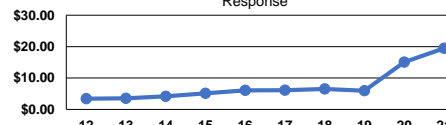
Operating Expense per Vehicle Revenue Mile: Bus



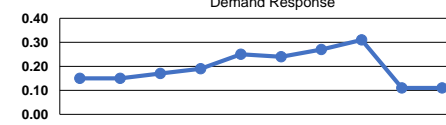
Unlinked Passenger Trips per Vehicle Revenue Mile: Bus



Operating Expense per Vehicle Revenue Mile: Demand Response



Unlinked Passenger Trips per Vehicle Revenue Mile: Demand Response



**Notes:**

<sup>a</sup>Demand Response - Taxi (DR/TX) and non-dedicated fleets do not report fleet age data.