

General Information

Urbanized Area (UZA) Statistics - 2010 Census

Lawton, OK
 44 **Square Miles**
 94,457 **Population**
 312 **Pop. Rank out of 498 UZAs**

Service Area Statistics

42 **Square Miles**
 93,714 **Population**

Service Consumption

174,471 **Annual Unlinked Trips (UPT)**

Service Supplied

392,350 **Annual Vehicle Revenue Miles (VRM)**
 30,047 **Annual Vehicle Revenue Hours (VRH)**

Database Information

NTDID: 60094
 Reporter Type: Reduced Reporter

Asset Type: Tier II
 Sponsor NTDID:

Financial Information

Sources of Operating Funds Expended

Fare Revenues	\$113,300	5.4%
Local Funds	\$0	0.0%
State Funds	\$0	0.0%
Federal Assistance	\$1,989,889	94.1%
Other Funds	\$12,000	0.6%
Total Operating Funds Expended	\$2,115,189	100.0%

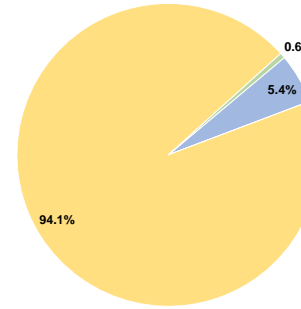
Sources of Capital Funds Expended

Fare Revenues	\$0
Local Funds	\$0
State Funds	\$0
Federal Assistance	\$0
Other Funds	\$0
Total Capital Funds Expended	\$0

Assets

Revenue Vehicles	20
Service Vehicles	6
Facilities	0

Operating Funding Sources



Performance Measure Targets - 2022

Performance Measure - Asset Type - Target % not in State of Good Repair
 Equipment - Automobiles - 100%
 Equipment - Trucks and other Rubber Tire Vehicles - 80%
 Rolling Stock - BU - Bus - 0%
 Rolling Stock - CU - Cutaway - 0%
 Rolling Stock - VN - Van - 33%

Modal Characteristics

Operation Characteristics

Vehicles Operated at Maximum Service

Mode	Directly Operated	Purchased Transportation	Operating Expenses	Fare Revenues	Uses of Capital Funds	Annual Unlinked Trips	Annual Vehicle Revenue Miles	Annual Vehicle Revenue Hours	Average Fleet Age in Years ^a
Demand Response	8	-	\$113,206	\$27,730	\$0	9,714	66,320	6,254	6.0
Bus	13	-	\$2,001,983	\$85,570	\$0	164,757	326,030	23,793	7.4
Total	21	-	\$2,115,189	\$113,300	\$0	174,471	392,350	30,047	

Performance Measures

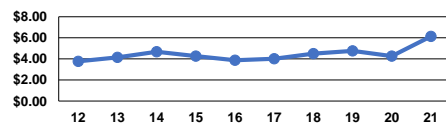
Service Efficiency

Mode	Operating Expenses per Vehicle Revenue Mile	Operating Expenses per Vehicle Revenue Hour
Demand Response	\$1.71	\$18.10
Bus	\$6.14	\$84.14
Total	\$5.39	\$70.40

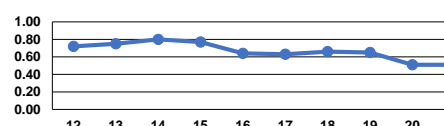
Service Effectiveness

Mode	Operating Expenses per Unlinked Passenger Trip	Unlinked Trips per Vehicle Revenue Mile	Unlinked Trips per Vehicle Revenue Hour
Demand Response	\$11.65	0.1	1.6
Bus	\$12.15	0.5	6.9
Total	\$12.12	0.4	5.8

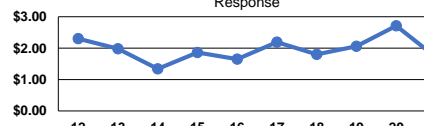
Operating Expense per Vehicle Revenue Mile: Bus



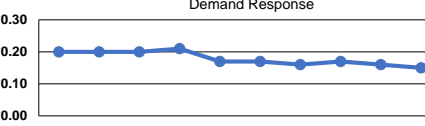
Unlinked Passenger Trips per Vehicle Revenue Mile: Bus



Operating Expense per Vehicle Revenue Mile: Demand Response



Unlinked Passenger Trips per Vehicle Revenue Mile: Demand Response



Notes:

^aDemand Response - Taxi (DR/TX) and non-dedicated fleets do not report fleet age data.