

**General Information**

**Urbanized Area (UZA) Statistics - 2010 Census**

Santa Fe, NM  
 53 Square Miles  
 89,284 Population  
 326 Pop. Rank out of 498 UZAs

**Other UZAs Served**

0 New Mexico Non-UZA

**Service Area Statistics**

10,119 Square Miles  
 289,292 Population

**Service Consumption**

63,556 Annual Unlinked Trips (UPT)

**Service Supplied**

1,040,606 Annual Vehicle Revenue Miles (VRM)  
 43,097 Annual Vehicle Revenue Hours (VRH)

**Database Information**

NTDID: 60138  
 Reporter Type: Reduced Reporter  
 Asset Type: Tier II  
 Sponsor NTDID: 6R03

**Financial Information**

**Sources of Operating Funds Expended**

Fare Revenues	\$0	0.0%
Local Funds	\$611,173	13.7%
State Funds	\$0	0.0%
Federal Assistance	\$3,638,964	81.7%
Other Funds	\$206,245	4.6%
<b>Total Operating Funds Expended</b>	<b>\$4,456,382</b>	<b>100.0%</b>

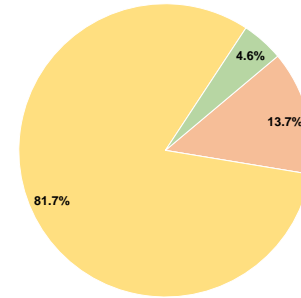
**Sources of Capital Funds Expended**

Fare Revenues	\$0	0.0%
Local Funds	\$222,527	11.3%
State Funds	\$268,279	13.6%
Federal Assistance	\$1,481,510	75.1%
Other Funds	\$0	0.0%
<b>Total Capital Funds Expended</b>	<b>\$1,972,316</b>	<b>100.0%</b>

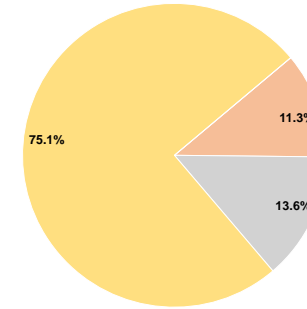
**Assets**

Revenue Vehicles	50
Service Vehicles	14
Facilities	8

**Operating Funding Sources**



**Capital Funding Sources**



**Performance Measure Targets - 2022**

- Performance Measure - Asset Type - Target % not in State of Good Repair
- Equipment - Automobiles - 20%
- Equipment - Trucks and other Rubber Tire Vehicles - 20%
- Facility - Administrative / Maintenance Facilities - 20%
- Facility - Passenger / Parking Facilities - 20%
- Rolling Stock - AO - Automobile - 20%
- Rolling Stock - BU - Bus - 20%
- Rolling Stock - CU - Cutaway - 20%
- Rolling Stock - MV - Minivan - 20%
- Rolling Stock - SB - School Bus - 20%
- Rolling Stock - VN - Van - 20%

**Modal Characteristics**

**Operation Characteristics**

**Vehicles Operated at Maximum Service**

Mode	Directly Operated	Purchased Transportation	Operating Expenses	Fare Revenues	Uses of Capital Funds	Annual Unlinked Trips	Annual Vehicle Revenue Miles	Annual Vehicle Revenue Hours	Average Fleet Age in Years <sup>a</sup>
Demand Response	6	-	\$673,026	\$0	\$433,910	9,194	100,097	9,481	6.5
Bus	30	-	\$3,783,356	\$0	\$1,538,406	54,362	940,509	33,616	5.1
<b>Total</b>	<b>36</b>	<b>-</b>	<b>\$4,456,382</b>	<b>\$0</b>	<b>\$1,972,316</b>	<b>63,556</b>	<b>1,040,606</b>	<b>43,097</b>	

**Performance Measures**

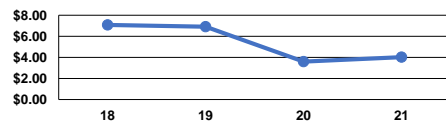
**Service Efficiency**

Mode	Operating Expenses per Vehicle Revenue Mile	Operating Expenses per Vehicle Revenue Hour
Demand Response	\$6.72	\$70.99
Bus	\$4.02	\$112.55
<b>Total</b>	<b>\$4.28</b>	<b>\$103.40</b>

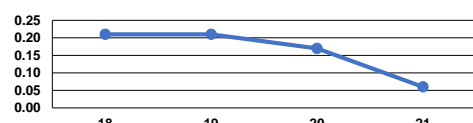
**Service Effectiveness**

Mode	Operating Expenses per Unlinked Passenger Trip	Unlinked Trips per Vehicle Revenue Mile	Unlinked Trips per Vehicle Revenue Hour
Demand Response	\$73.20	0.1	1.0
Bus	\$69.60	0.1	1.6
<b>Total</b>	<b>\$70.12</b>	<b>0.1</b>	<b>1.5</b>

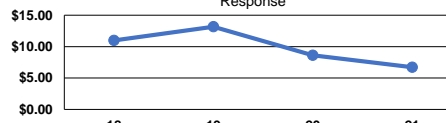
Operating Expense per Vehicle Revenue Mile: Bus



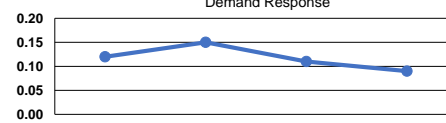
Unlinked Passenger Trips per Vehicle Revenue Mile: Bus



Operating Expense per Vehicle Revenue Mile: Demand Response



Unlinked Passenger Trips per Vehicle Revenue Mile: Demand Response



**Notes:**

<sup>a</sup>Demand Response - Taxi (DR/TX) and non-dedicated fleets do not report fleet age data.