

General Information

Federally Recognized Tribal Statistical Areas

Navajo Nation Reservation and Off-Reservation Trust Land, AZ--NM--UT

Service Consumption

6,805 Annual Unlinked Trips (UPT)

Service Supplied

143,708 Annual Vehicle Revenue Miles (VRM)
 3,954 Annual Vehicle Revenue Hours (VRH)

Database Information

NTDID: 90005
 Reporter Type: Tribal Reporter

Asset Type: Tier II
 Sponsor NTDID: 9R01

Financial Information

Sources of Operating Funds Expended

Fare Revenues	\$0	0.0%
Local Funds	\$117,579	6.5%
State Funds	\$0	0.0%
Federal Assistance	\$1,699,687	93.5%
Other Funds	\$0	0.0%
Total Operating Funds Expended	\$1,817,266	100.0%

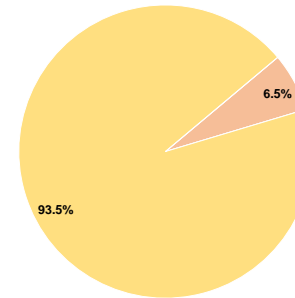
Sources of Capital Funds Expended

Fare Revenues	\$0	0.0%
Local Funds	\$1,003,252	16.7%
State Funds	\$0	0.0%
Federal Assistance	\$5,015,441	83.3%
Other Funds	\$0	0.0%
Total Capital Funds Expended	\$6,018,693	100.0%

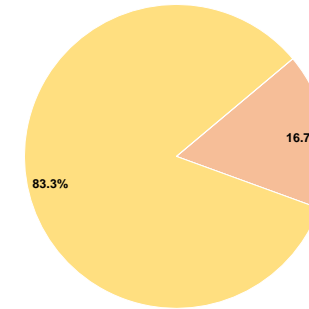
Assets

Revenue Vehicles	55
Service Vehicles	2
Facilities	1

Operating Funding Sources



Capital Funding Sources



Performance Measure Targets - 2022

Performance Measure - Asset Type - Target % not in State of Good Repair
 Equipment - Automobiles - 50%
 Equipment - Trucks and other Rubber Tire Vehicles - 50%
 Facility - Administrative / Maintenance Facilities - 20%
 Rolling Stock - CU - Cutaway - 26%
 Rolling Stock - MV - Minivan - 26%
 Rolling Stock - VN - Van - 26%

Modal Characteristics

Operation Characteristics

Vehicles Operated at Maximum Service

Mode	Directly Operated	Purchased Transportation	Operating Expenses	Fare Revenues	Uses of Capital Funds	Annual Unlinked Trips	Annual Vehicle Revenue Miles	Annual Vehicle Revenue Hours	Average Fleet Age in Years ^a
Commuter Bus	16	-	\$1,817,266	\$0	\$6,018,693	6,805	143,708	3,954	2.1
Total	16	-	\$1,817,266	\$0	\$6,018,693	6,805	143,708	3,954	

Performance Measures

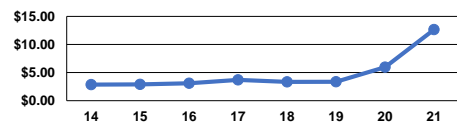
Service Efficiency

Mode	Operating Expenses per Vehicle Revenue Mile	Operating Expenses per Vehicle Revenue Hour
Commuter Bus	\$12.65	\$459.60
Total	\$12.65	\$459.60

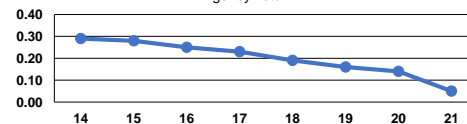
Service Effectiveness

Mode	Operating Expenses per Unlinked Passenger Trip	Unlinked Trips per Vehicle Revenue Mile	Unlinked Trips per Vehicle Revenue Hour
Commuter Bus	\$267.05	0.0	1.7
Total	\$267.05	0.0	1.7

Operating Expense per Vehicle Revenue Mile: Agency Total



Unlinked Passenger Trips per Vehicle Revenue Mile: Agency Total



Notes:

^aDemand Response - Taxi (DR/TX) and non-dedicated fleets do not report fleet age data.